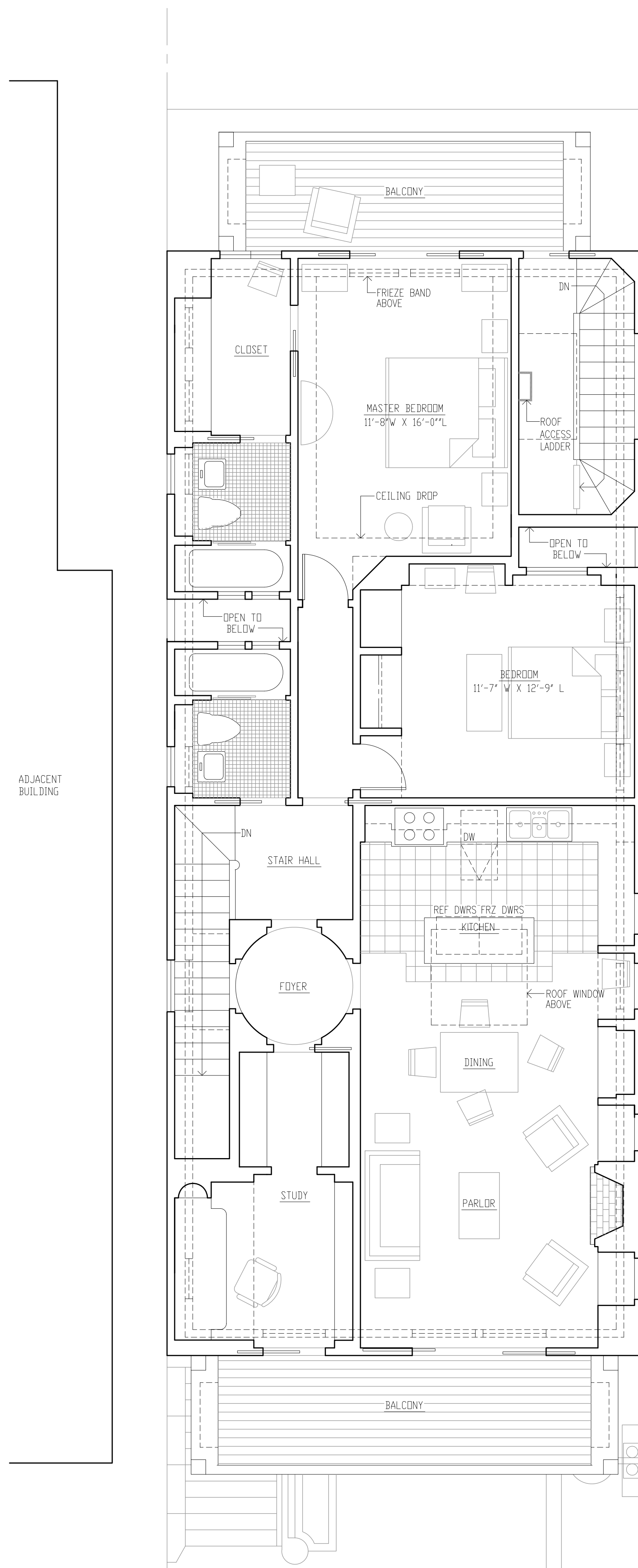
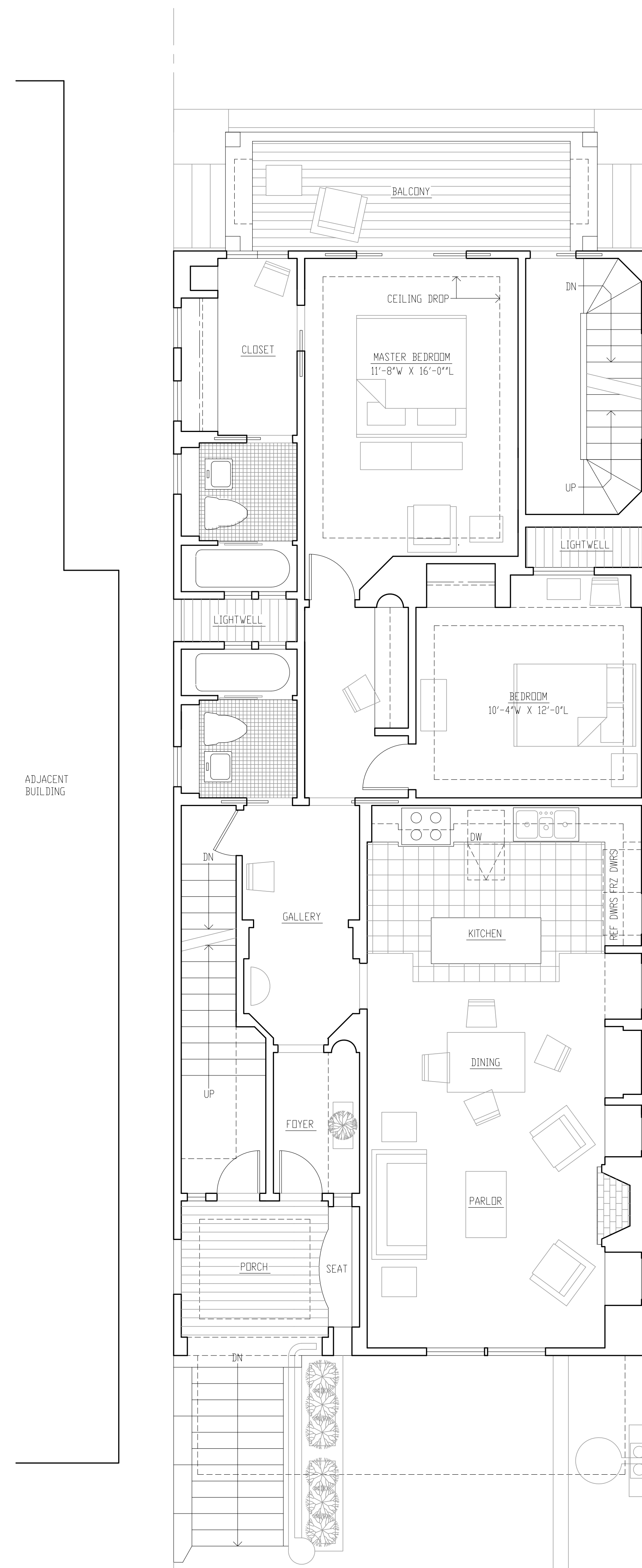


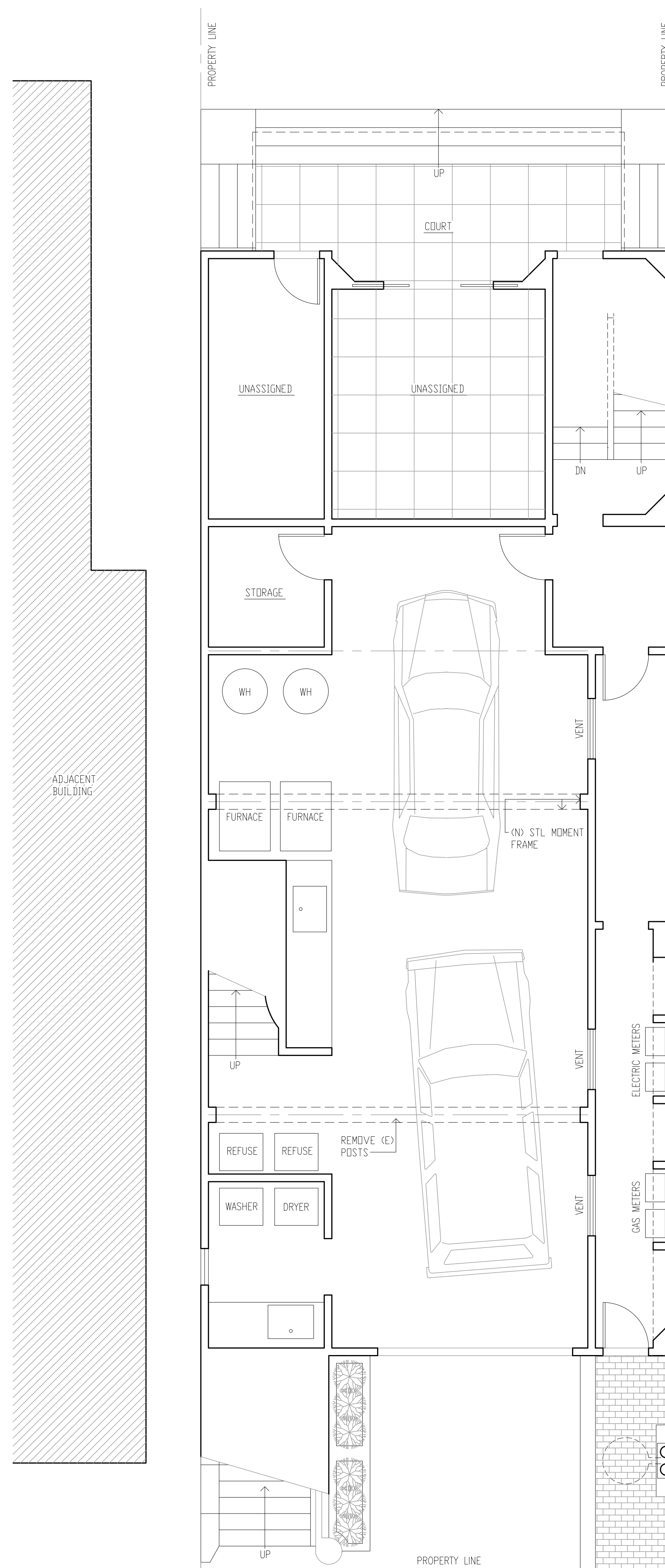
With the intent to persuade the building owners to reexamine the course of their project, our office proposed to improve the current scope with an approach that recognizes the Gothic Revival (Victorian) period, a dominant style in the neighborhood, and current market rate housing trends. Because of these considerations, the two flats are designed as luxury apartments and organized into two zones. One that contains a parlor and related functions in one room street side, an arrangement that accommodates contemporary living styles, and the other to the rear yard a more private zone that contains both a master bedroom suite and a second bedroom. Individual rooms utilize period detailing and custom casework while ceilings are conceived as an equally important element for each use, an approach that is consistent with the Gothic Revival period. Project designed in 2014, unbuilt.



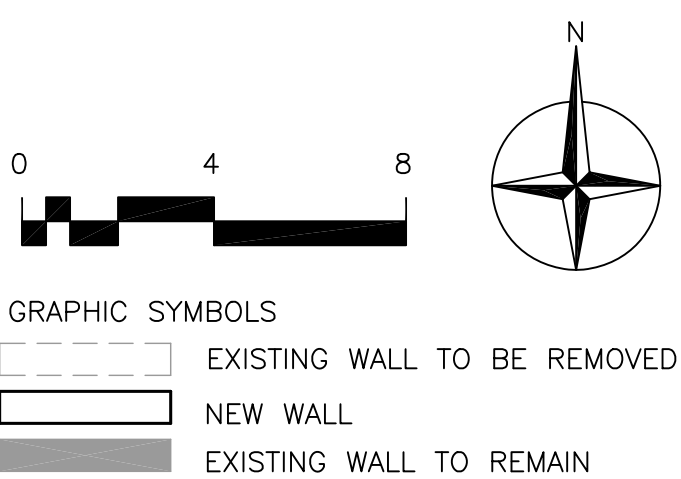
SECOND FLOOR PLAN
1/4" = 1'-0"

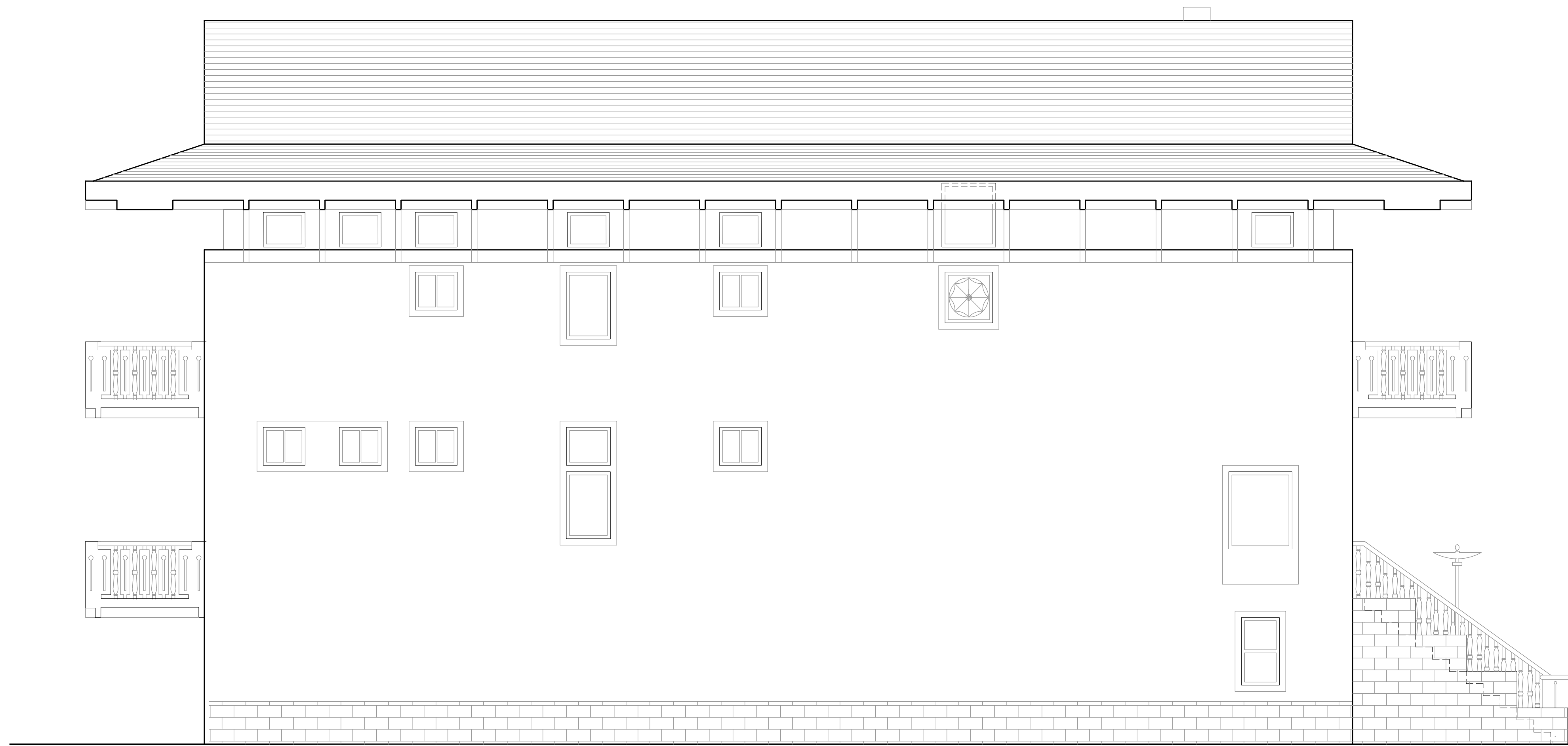


FIRST FLOOR PLAN
1/4" = 1'-0"

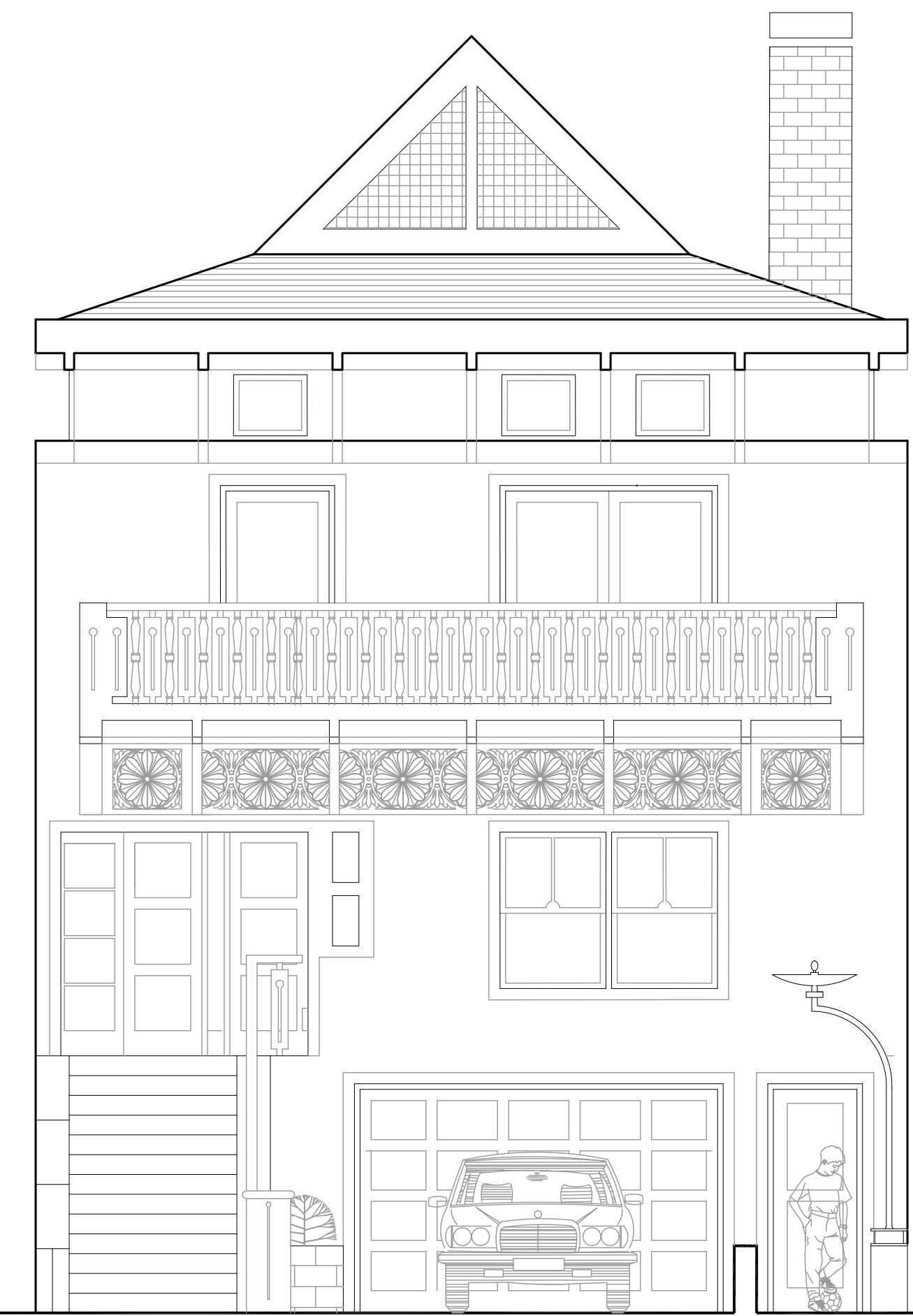


GROUND FLOOR PLAN
1/4" = 1'-0"



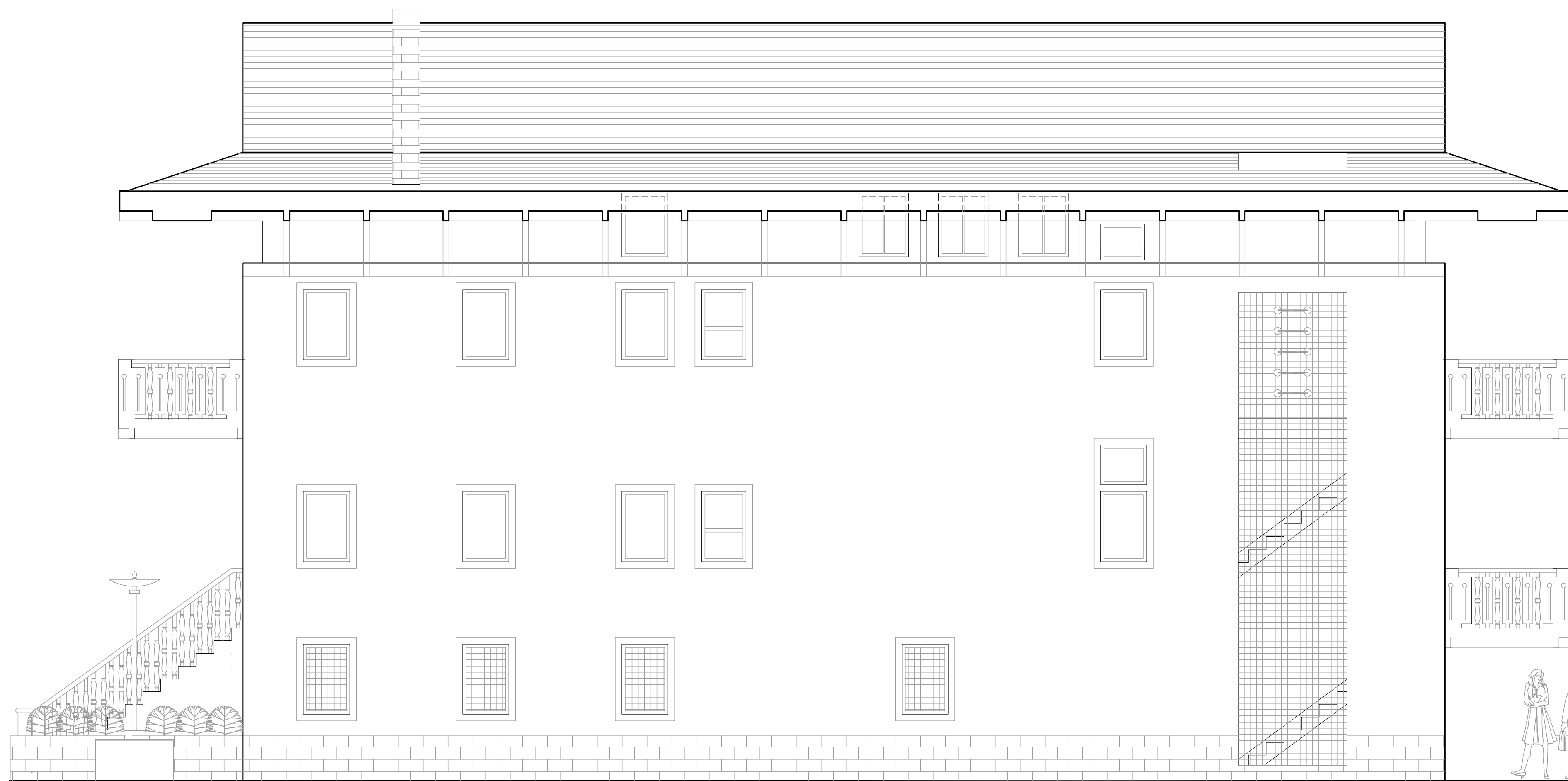


WEST ELEVATION
1/4" = 1'-0"

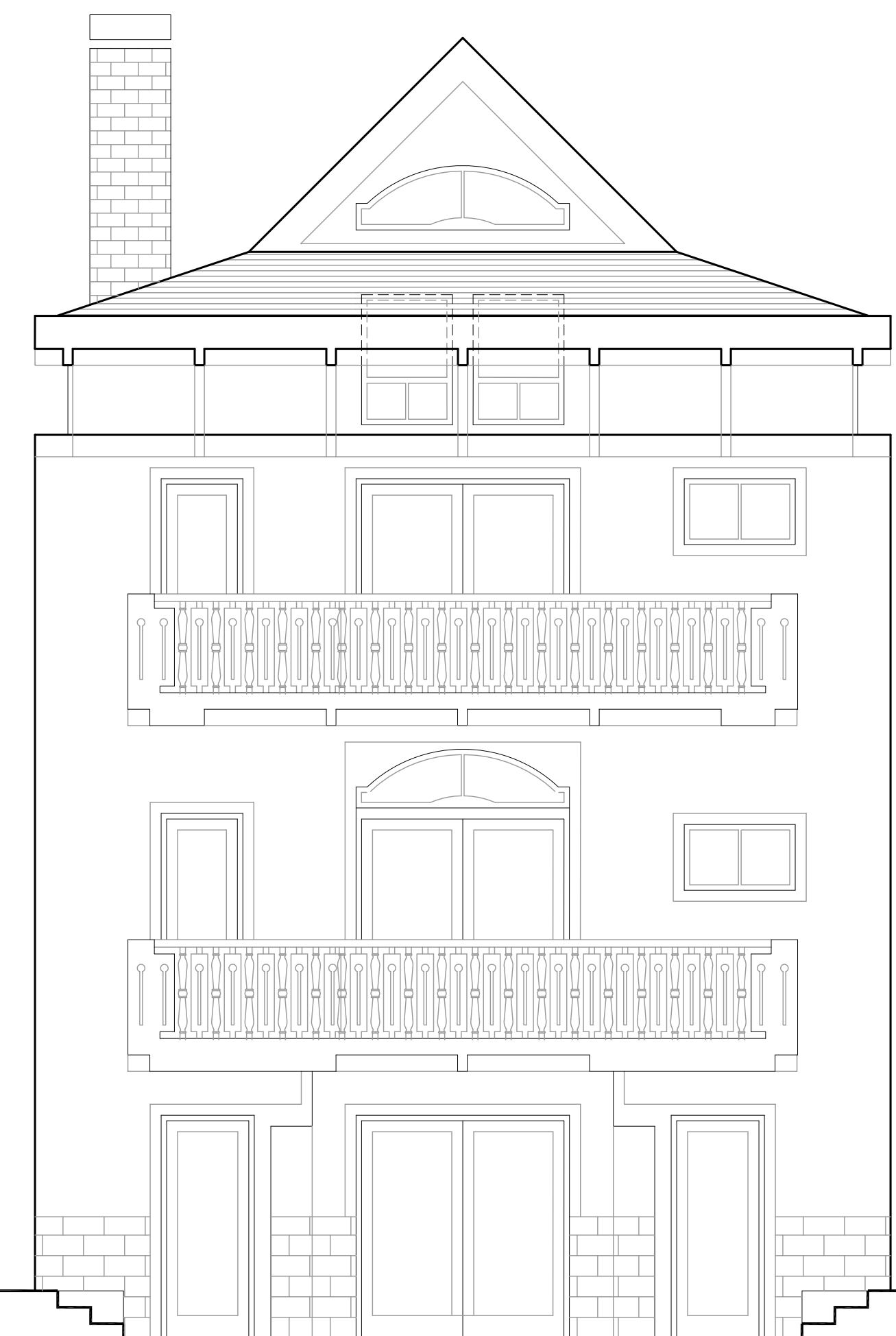


SOUTH ELEVATION (STREET)
1/4" = 1'-0"

ROOF
SECOND LEVEL
FIRST LEVEL
GROUND LEVEL

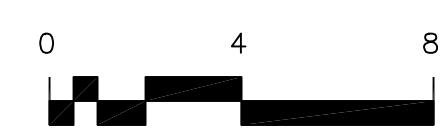


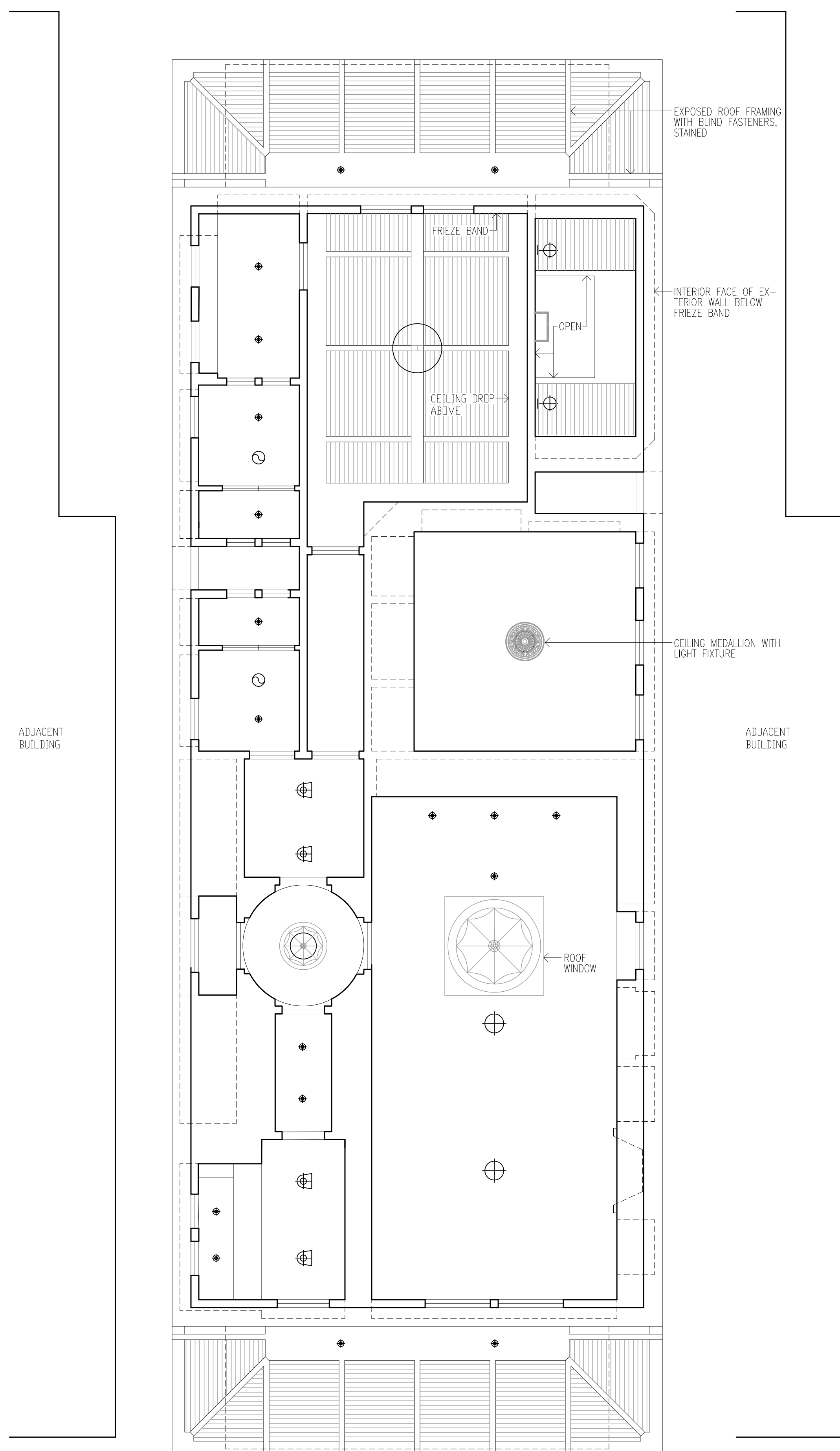
EAST ELEVATION
1/4" = 1'-0"



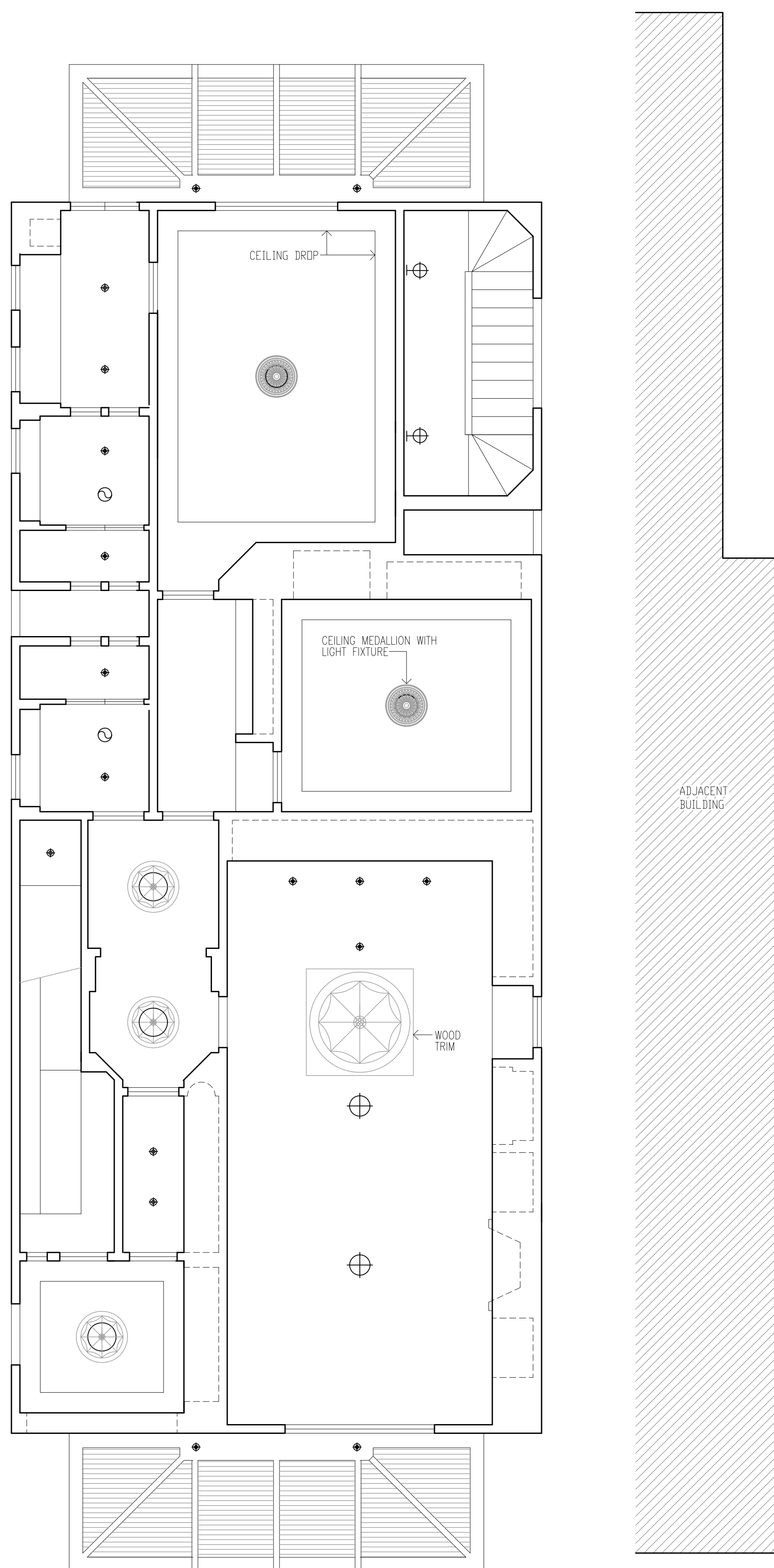
NORTH ELEVATION (YARD)
1/4" = 1'-0"

ROOF
SECOND LEVEL
FIRST LEVEL
GROUND LEVEL
COURT LEVEL

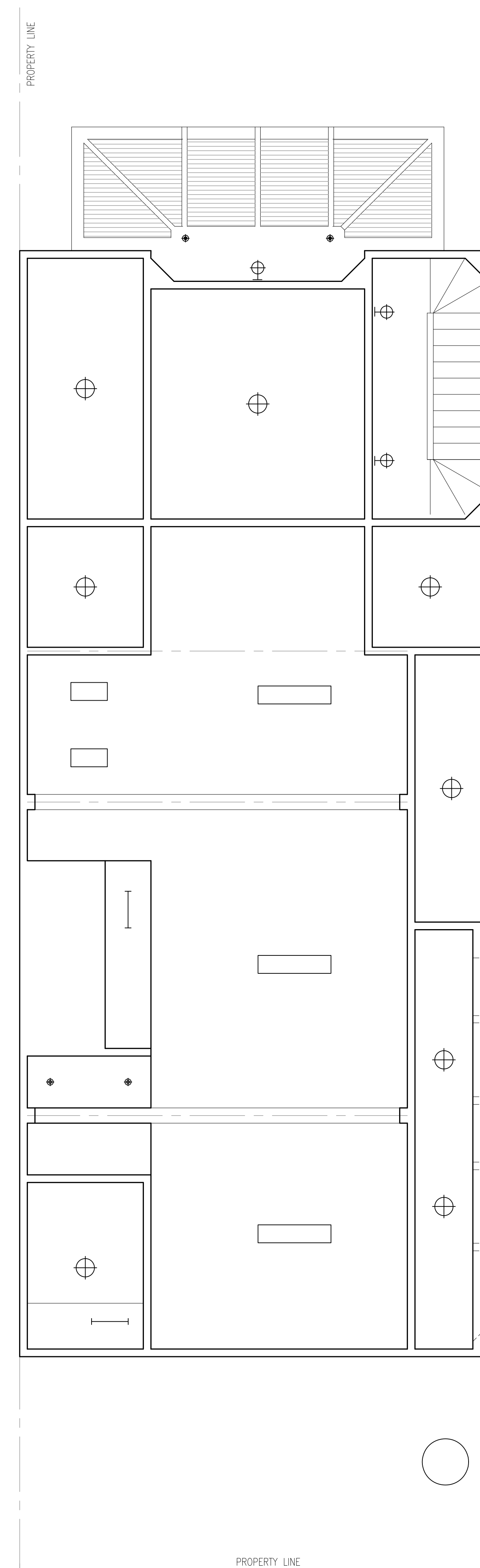




SECOND FLOOR REFLECTED CEILING PLAN
1/4" = 1'-0"

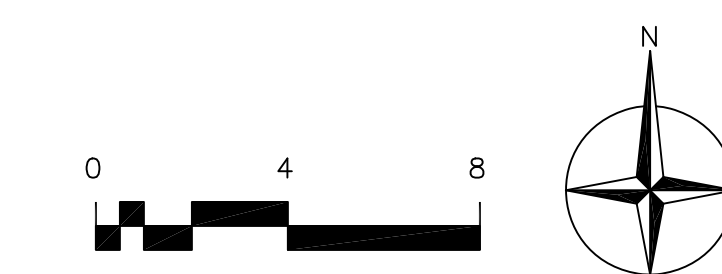


FIRST FLOOR REFLECTED CEILING PLAN
1/4" = 1'-0"



GROUND FLOOR REFLECTED CEILING PLAN
1/4" = 1'-0"

- LIGHTING SYMBOLS
- FAN
 - WALL SCOFF
 - 4" ROUND RECESSED DOWNLIGHT
 - 2" ROUND HIGH INTENSITY DOWNLIGHT
 - 2" ROUND RECESSED DOWNLIGHT
 - 4" ROUND HIGH INTENSITY DOWNLIGHT
 - PENDANT MOUNTED INCANDESCENT
 - 4" ROUND DOWNLIGHT - WALL WASH
 - LINEAR STRIP LIGHT
 - 1 X 4 FLOURESCENT FIXTURE
 - 1 X 2 FLOURESCENT FIXTURE



- GRAPHIC SYMBOLS
- EXISTING WALL TO BE REMOVED
 - NEW WALL
 - EXISTING WALL TO REMAIN