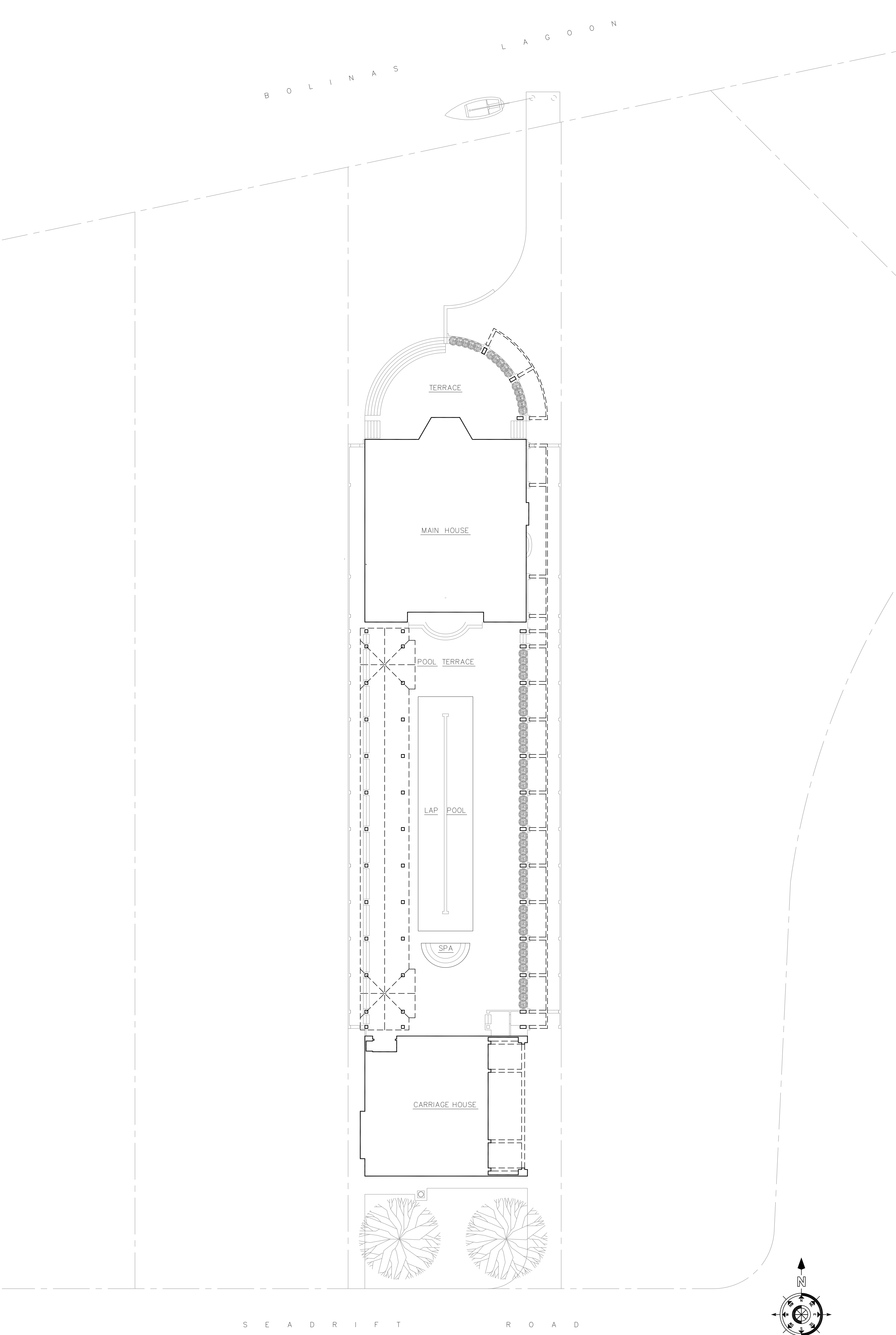


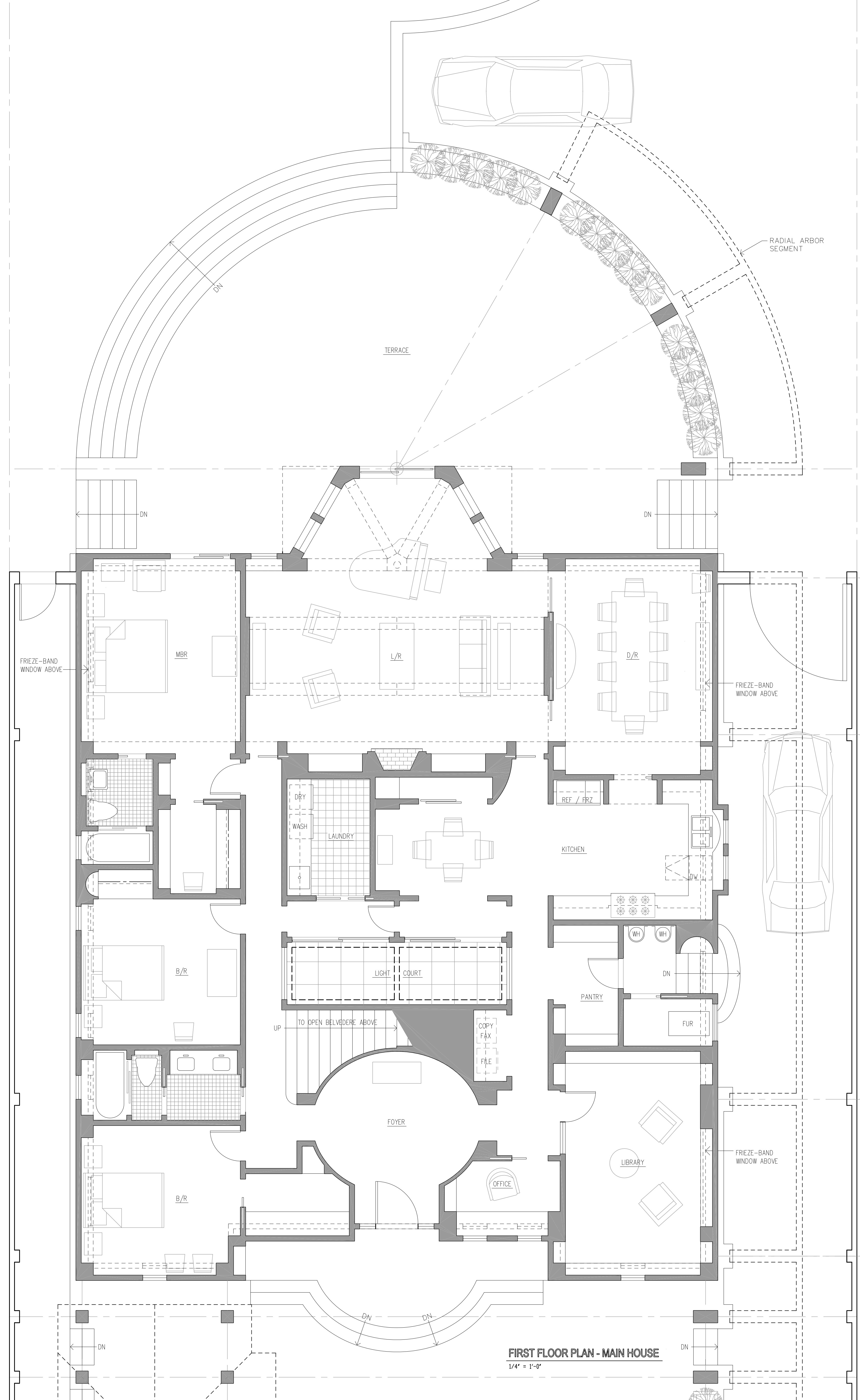
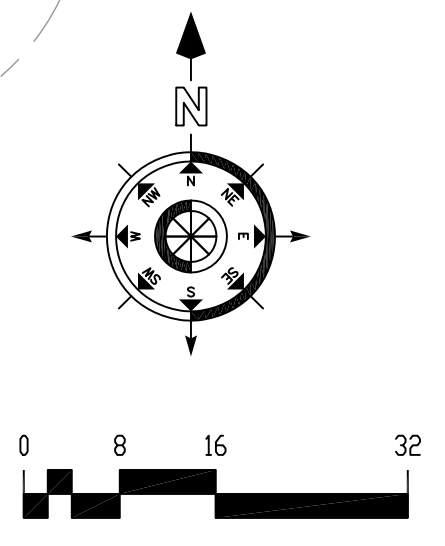
Located in a gated residential development just north of San Francisco, the house, pool and pool deck, and guest quarters look to the scale of its neighbors while importing local architectural vernacular in a design for an active family of four. Large spaces are created for luxurious living and site elements are used to respond to the beach climate of the San Francisco Bay Area. Social gatherings are accommodated at several positions on site and a sloped glass canopy connecting the main house with the carriage house contain the absolute latest in photo-voltaic technology. Design completed in 2012, unbuilt.



SEADRIFT ROAD

SITE PLAN

1/16" = 1'-0"



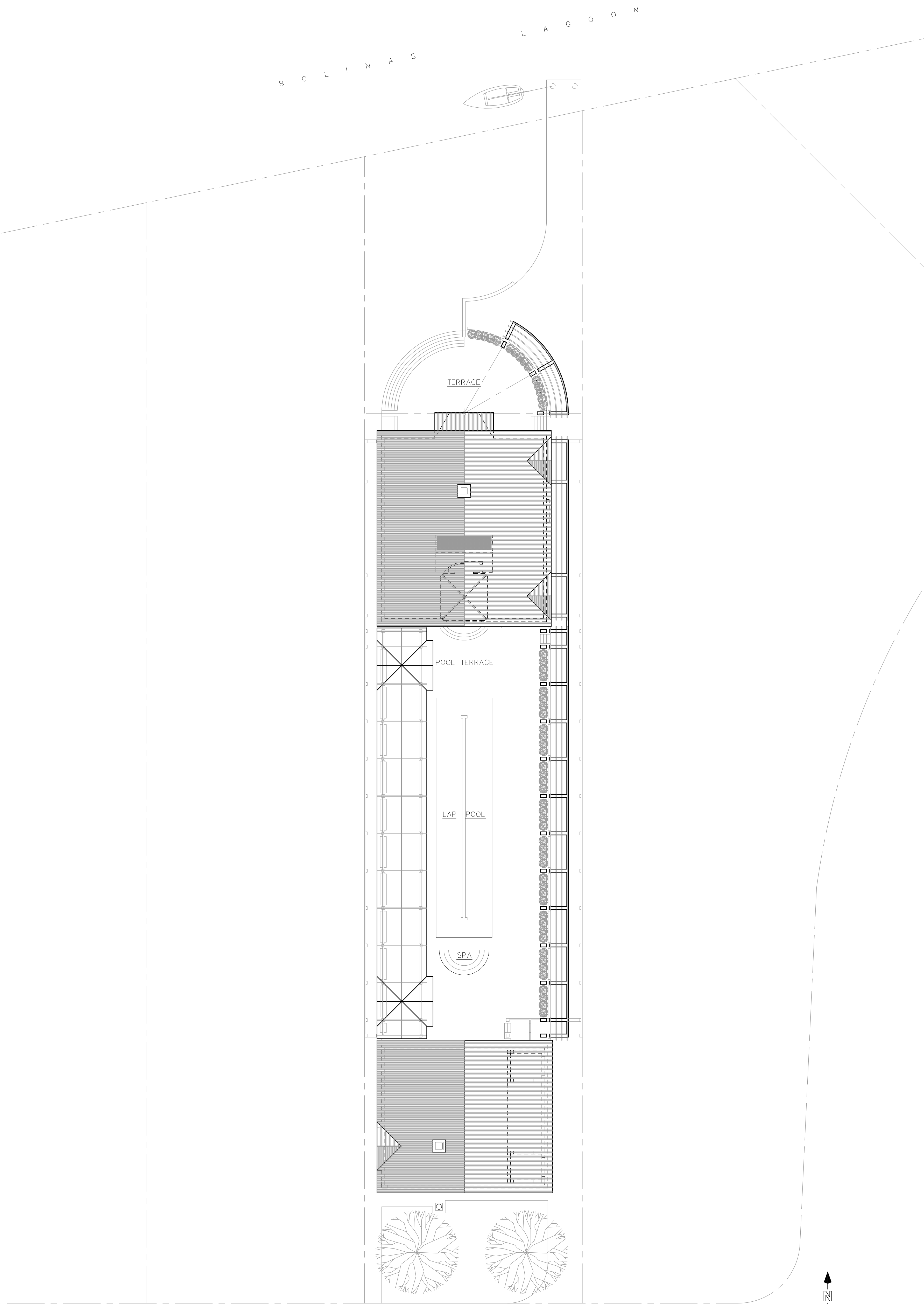
FIRST FLOOR PLAN - MAIN HOUSE

1/4" = 1'-0"

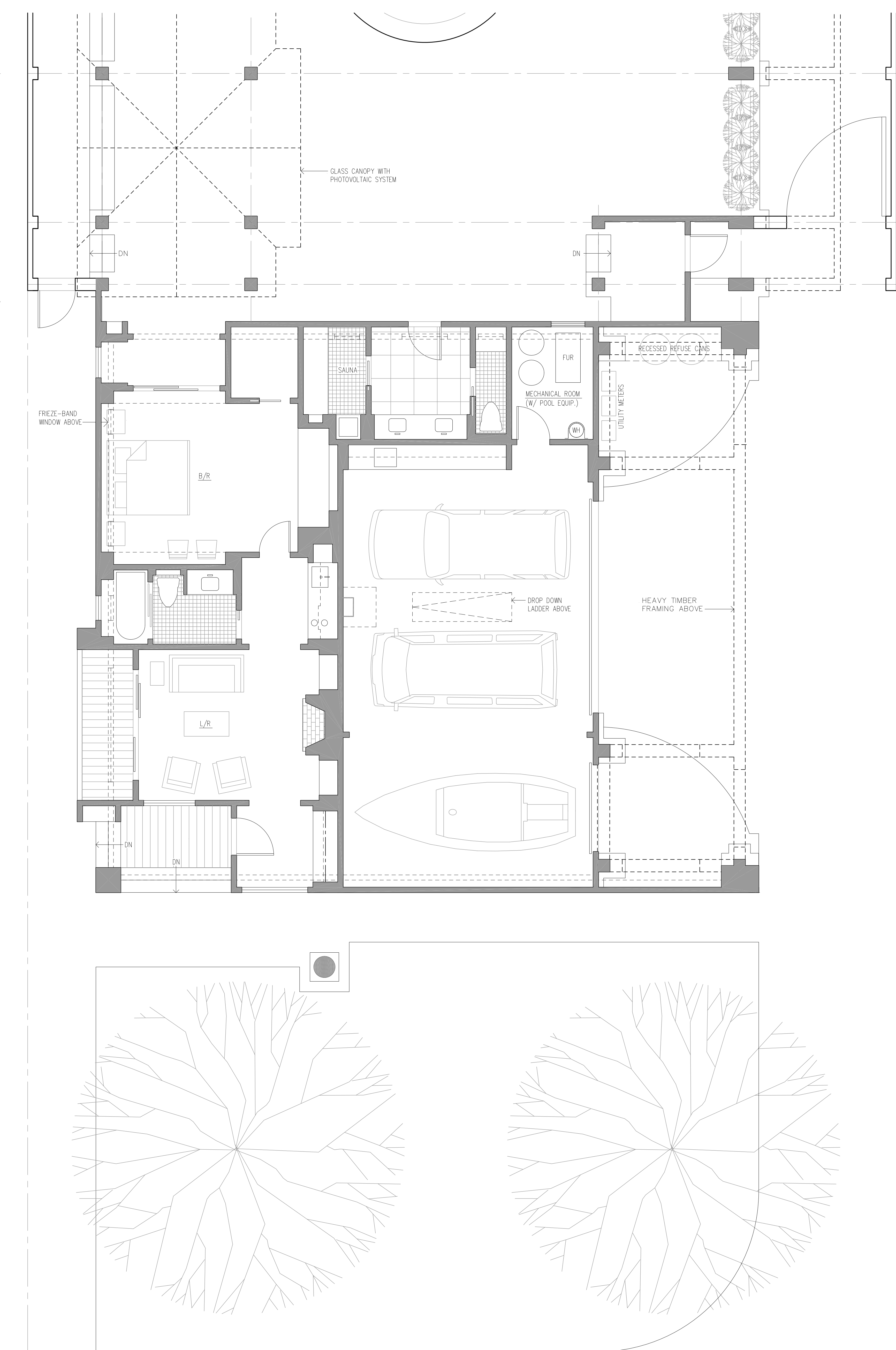
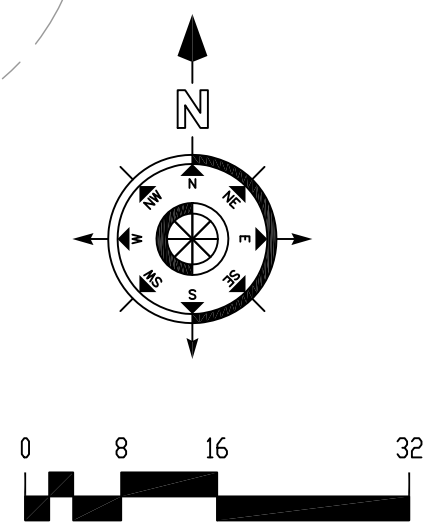
HOUSE ON SEADRIFT ROAD
STINSON BEACH, CA

CHARLES CREIGHTON CARLIN, AIA
ARCHITECT

SEPTEMBER 7, 2012 1



ROOF PLAN
1/16" = 1'-0"



FIRST FLOOR PLAN - CARRIAGE HOUSE
1/4" = 1'-0"

HOUSE ON SEADRIFT ROAD
STINSON BEACH, CA

CHARLES CREIGHTON CARLIN, AIA
ARCHITECT

SEPTEMBER 7, 2012 2

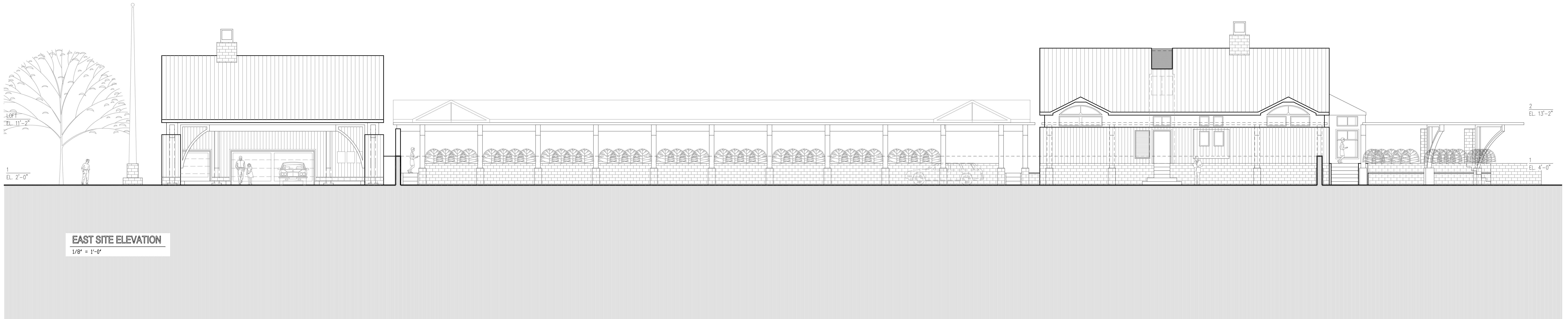


SOUTH ELEVATION - MAIN HOUSE
1/8" = 1'-0"

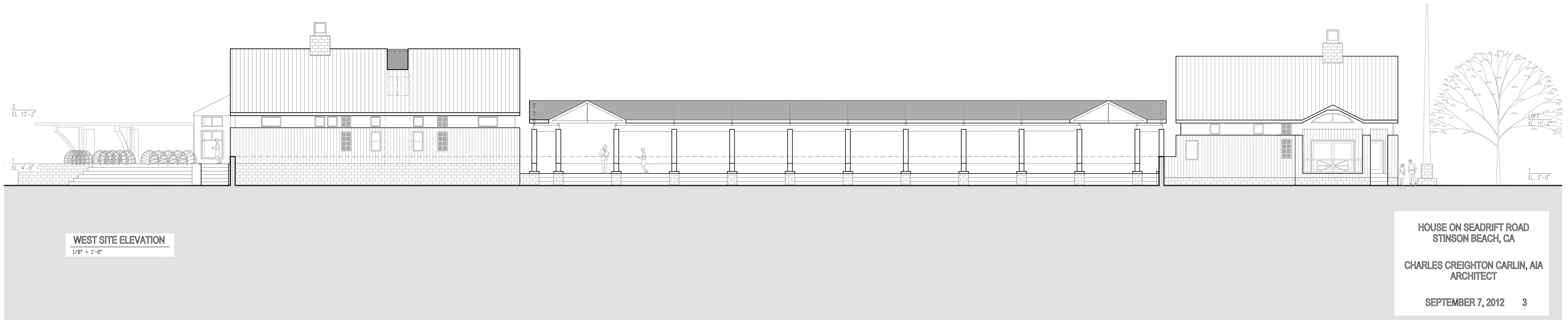
NORTH ELEVATION - MAIN HOUSE
1/8" = 1'-0"

SOUTH ELEVATION - CARRIAGE HOUSE
1/8" = 1'-0"

NORTH ELEVATION - CARRIAGE HOUSE
1/8" = 1'-0"



EAST SITE ELEVATION
1/8" = 1'-0"



WEST SITE ELEVATION
1/8" = 1'-0"

HOUSE ON SEADRIFT ROAD
STINSON BEACH, CA
CHARLES CREIGHTON CARLIN, AIA
ARCHITECT
SEPTEMBER 7, 2012 3