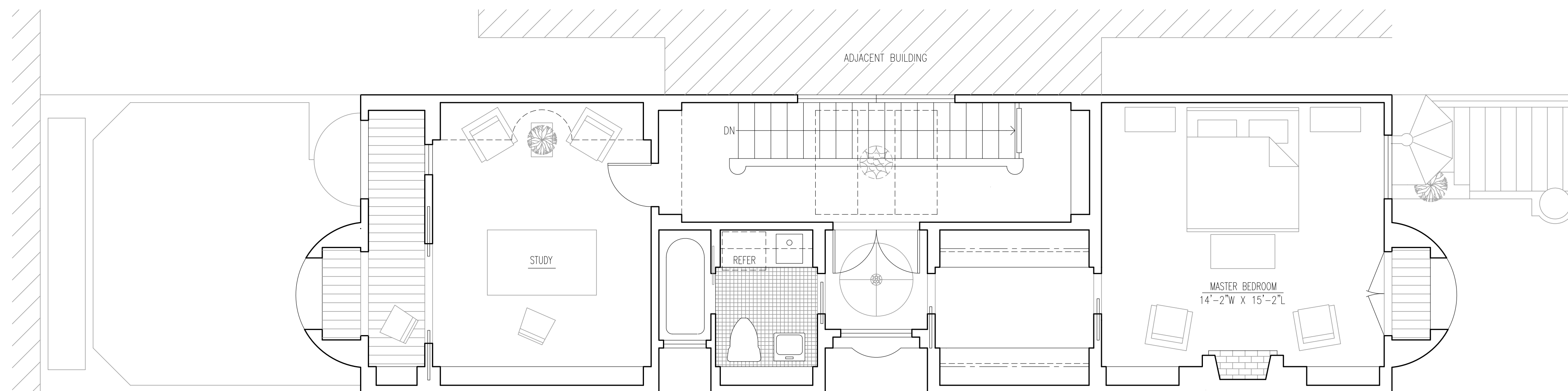


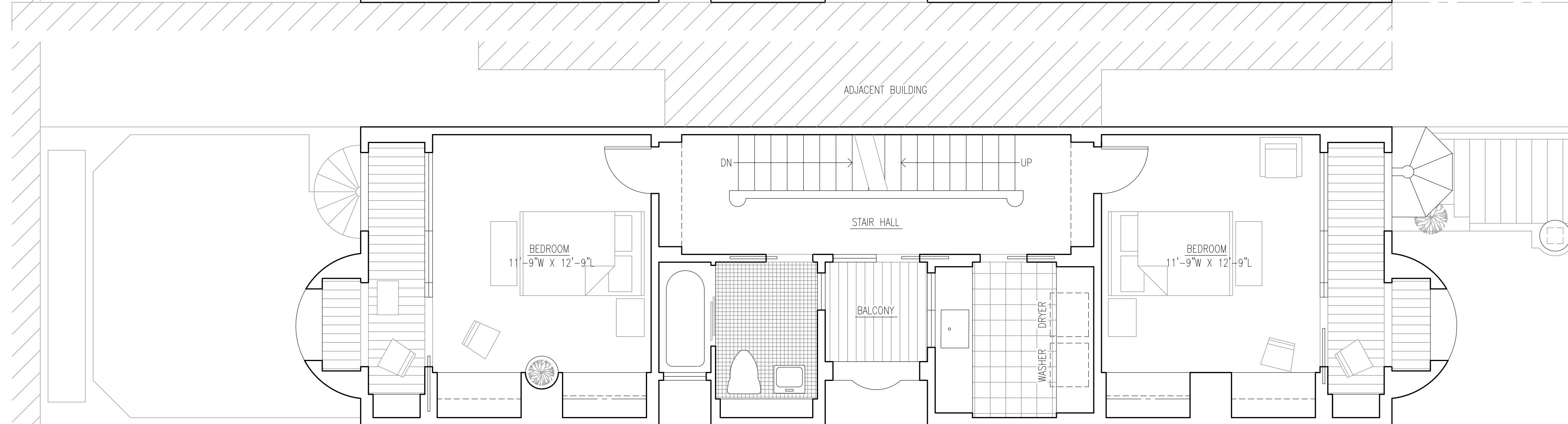
NEW RESIDENCE
SAN FRANCISCO, CA

With a very narrow parcel, sixteen feet wide by eighty-three feet long, our office designed a three-story town house over a garden studio apartment and a street-level single-car garage. Situated in an affluent neighborhood with many Gothic Revival (Victorian) town houses, this project used the prevailing style as a source for architectural inspiration. The first level contains the more public functions in which living, entry, parlor, kitchen, and dining, while the private uses are reserved for the upper levels. The master bedroom suite is quite formal and accommodating for long periods and an adjacent study is located on this level for quiet activities and work. Given the quality that we are searching for, custom casework and fine detailing enhance our efforts. Project designed in 2014, rebuilt.

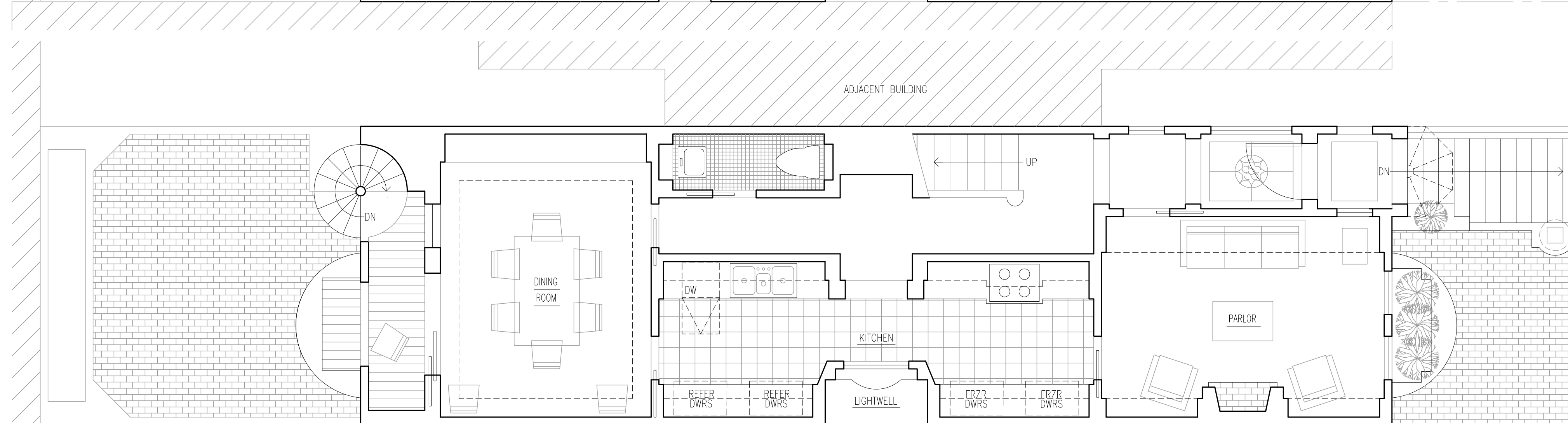
THIRD FLOOR PLAN
1/4" = 1'-0"



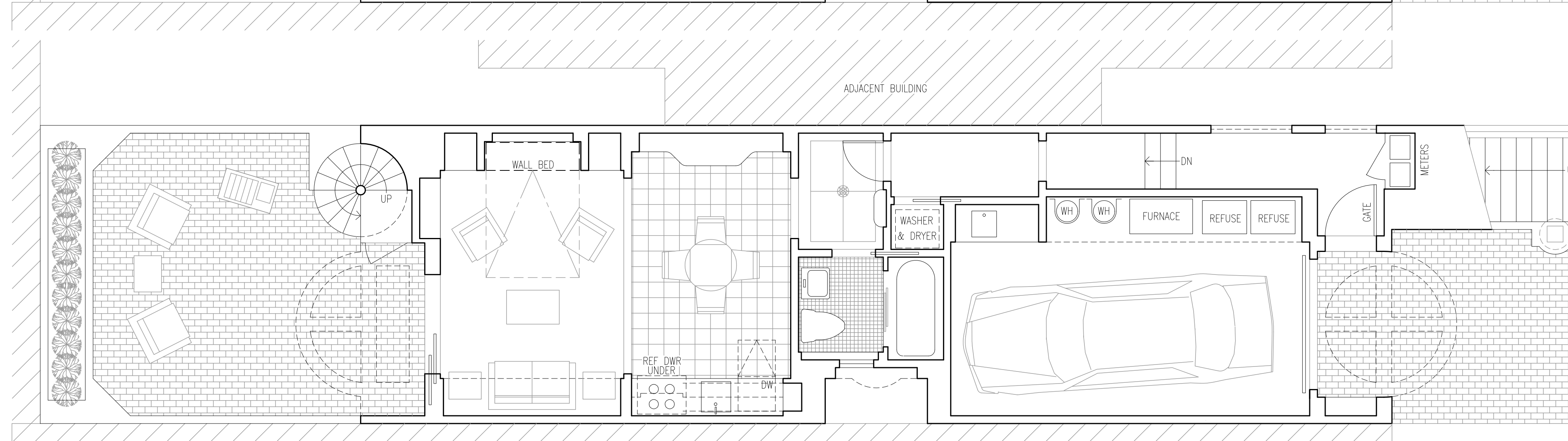
SECOND FLOOR PLAN
1/4" = 1'-0"



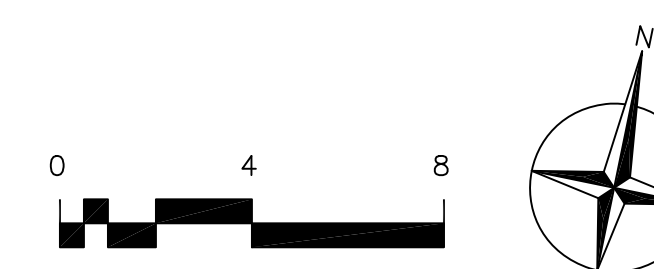
FIRST FLOOR PLAN
1/4" = 1'-0"



GROUND FLOOR PLAN
1/4" = 1'-0"



S C O T T S T R E E T

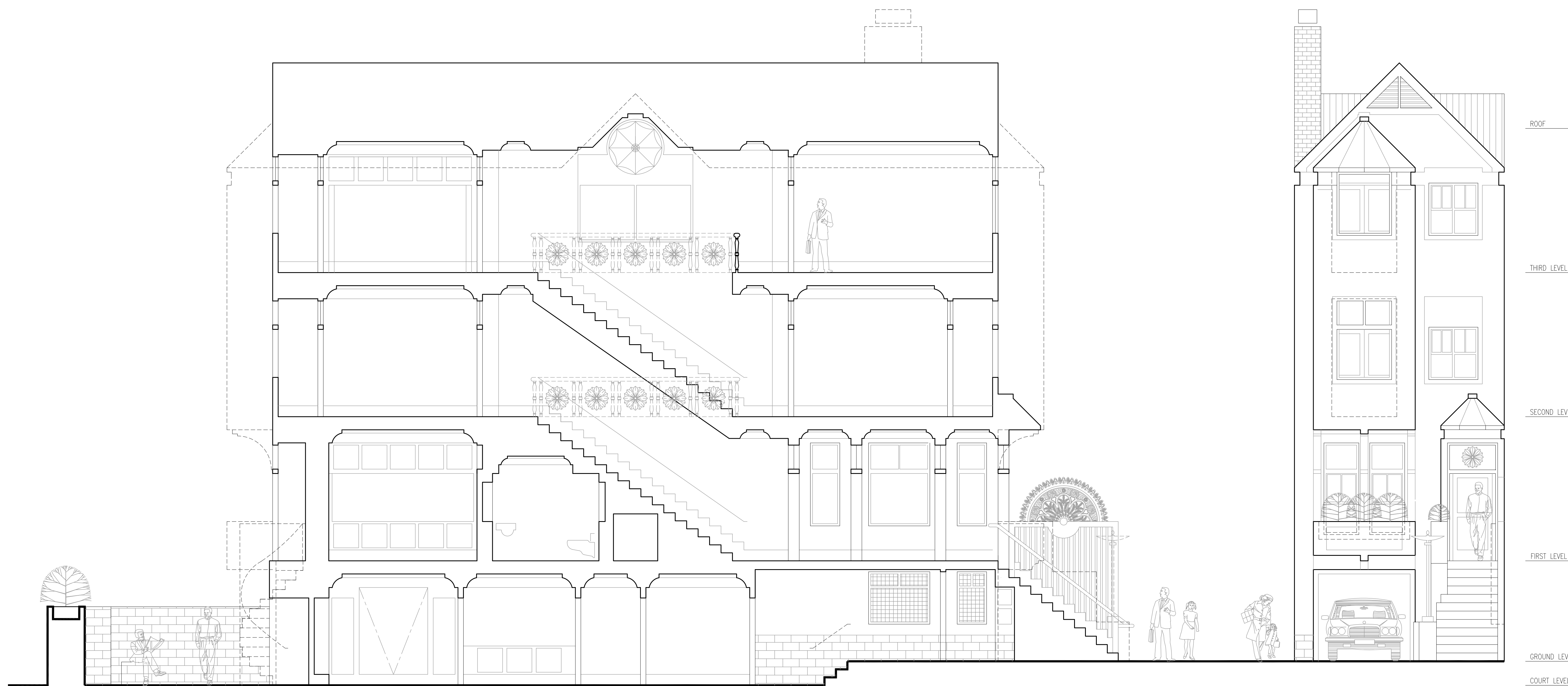


NEW RESIDENCE
SAN FRANCISCO, CALIFORNIA

CHARLES CREIGHTON CARLIN, AIA
ARCHITECT

Drawings and written material appearing herein constitute original and unpublished work of the Architect and may not be duplicated, used or disclosed without the prior written consent of the Architect.
Copyright © CHARLES CREIGHTON CARLIN, AIA

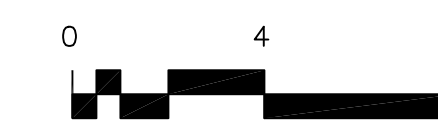
JULY 15, 2014 1



LONGITUDINAL SECTION B (LOOKING SOUTH)
1/4" = 1'-0"

WEST ELEVATION (REAR YARD)
1/4" = 1'-0"

ROOF
THIRD LEVEL
SECOND LEVEL
FIRST LEVEL
GROUND LEVEL
COURT LEVEL



NEW RESIDENCE
SAN FRANCISCO, CALIFORNIA

CHARLES CREIGHTON CARLIN, AIA
ARCHITECT

Drawings and written material appearing herein constitute original and unpublished work of the Architect and may not be duplicated, used or disclosed without the prior written consent of the Architect.
Copyright © CHARLES CREIGHTON CARLIN, AIA

JULY 15, 2014 2



LONGITUDINAL SECTION B (LOOKING SOUTH)
1/4" = 1'-0"

WEST ELEVATION (REAR YARD)
1/4" = 1'-0"



NEW RESIDENCE
SAN FRANCISCO, CALIFORNIA

CHARLES CREIGHTON CARLIN, AIA
ARCHITECT

Drawings and written material appearing herein constitute original and unpublished work of the Architect and may not be duplicated, used or disclosed without the prior written consent of the Architect.
Copyright © CHARLES CREIGHTON CARLIN, AIA

JULY 15, 2014 3