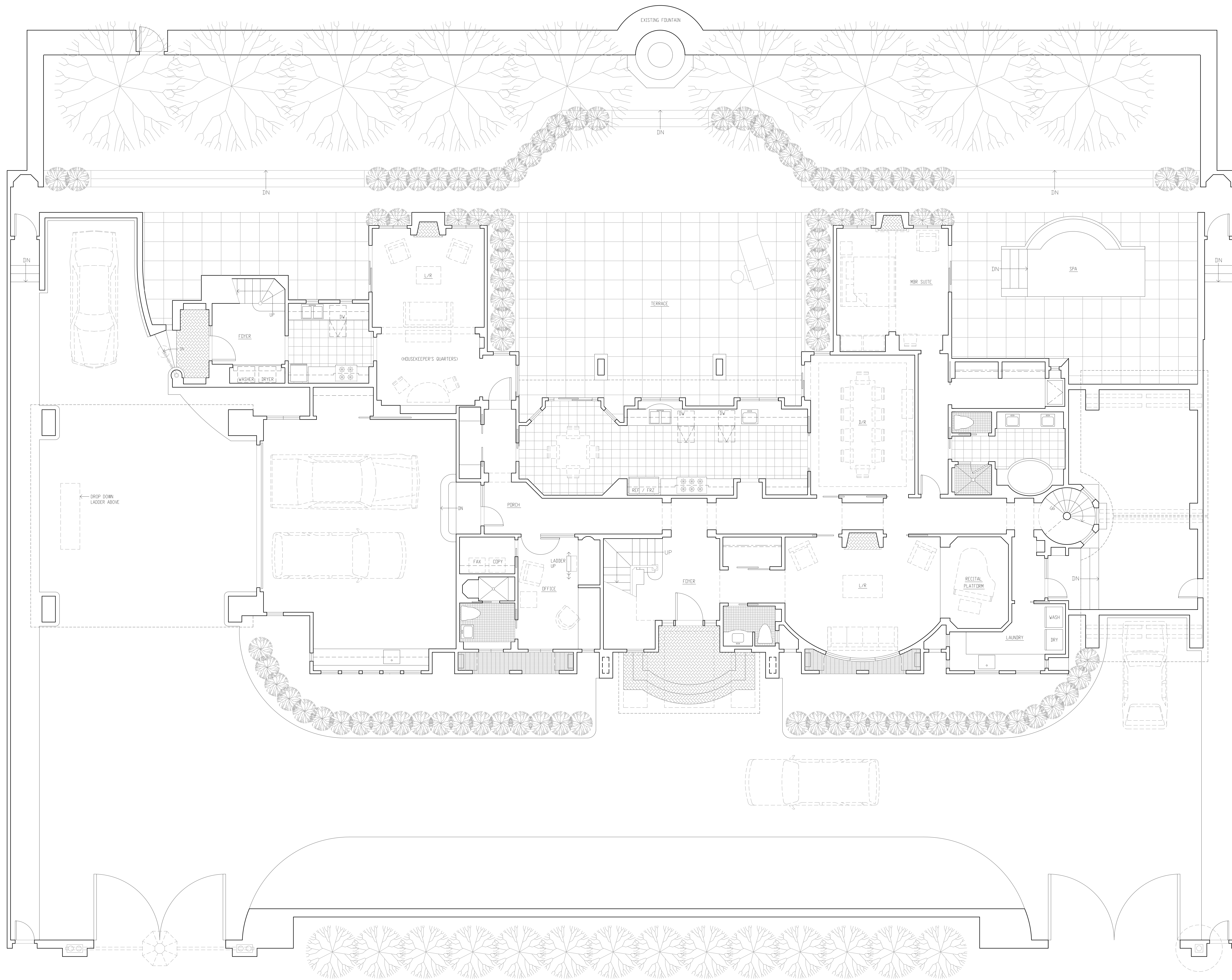
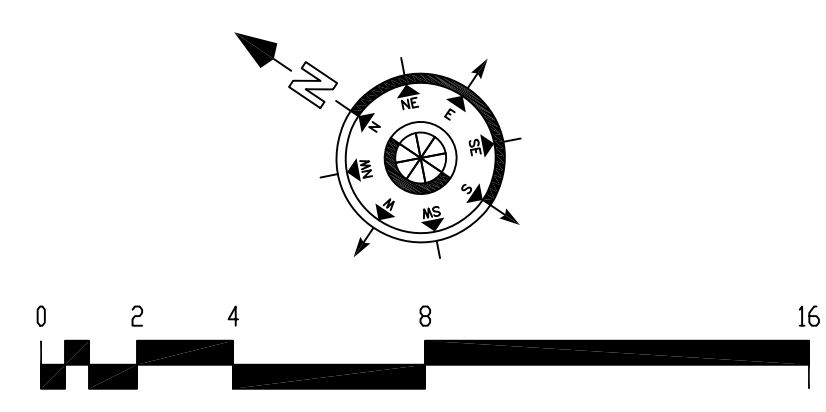


HOUSE IN HILLSBOROUGH, CALIFORNIA

Located in an affluent residential community just south of San Francisco, the house is derived from nineteenth century rural England, an historical period that is expressed in other houses nearby. While not consciously repeating an historical style, our approach is to use it as a point of departure and to interpret it while meeting our client's needs and aspirations. The site is flat and rectangular with the long southwestern boundary abutting Hillsborough Boulevard, a primary suburban artery infrequently travelled by non-residents. Design completed in 2012, unbuilt.

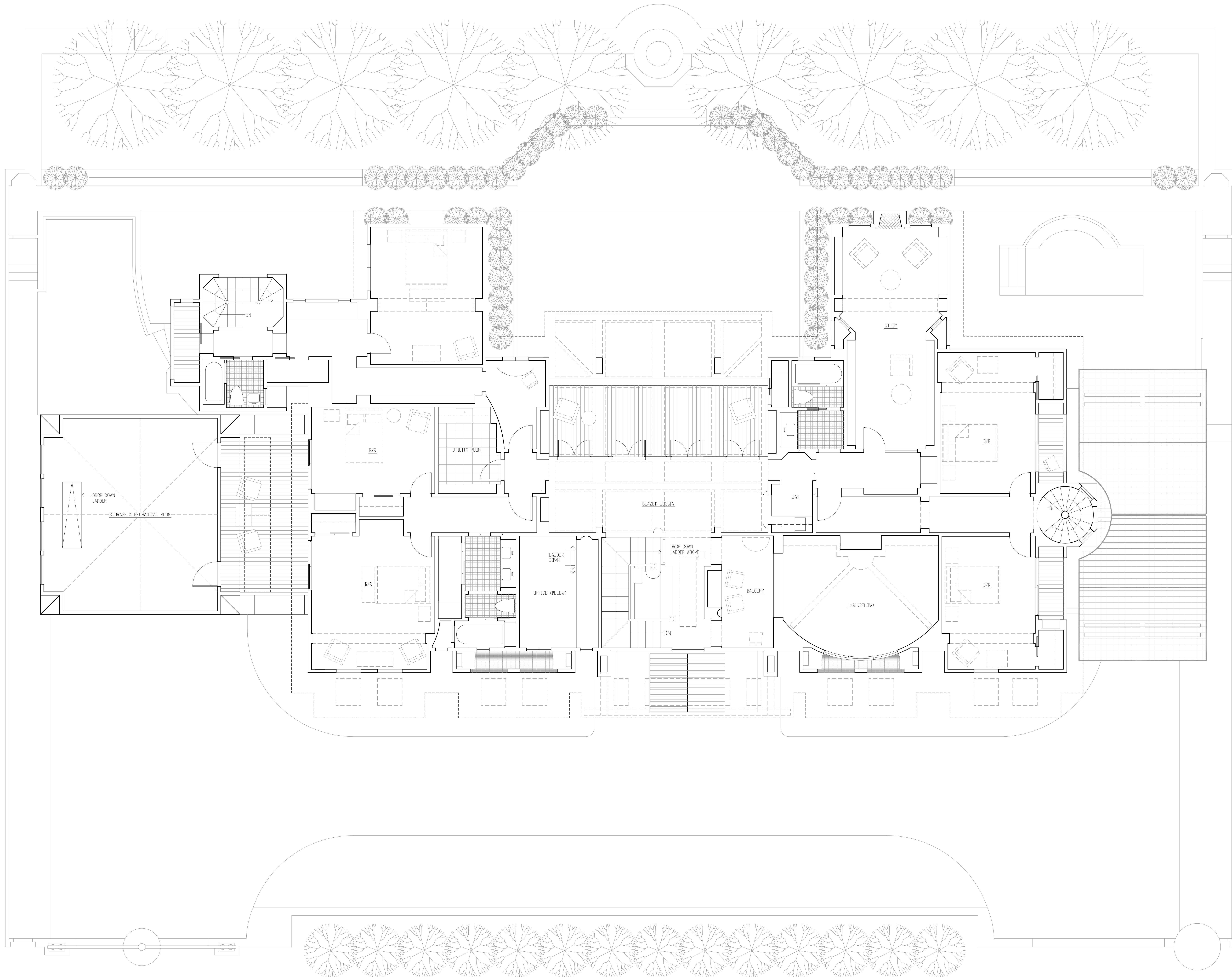


PROPOSED FIRST FLOOR PLAN  
1/4" = 1'-0"

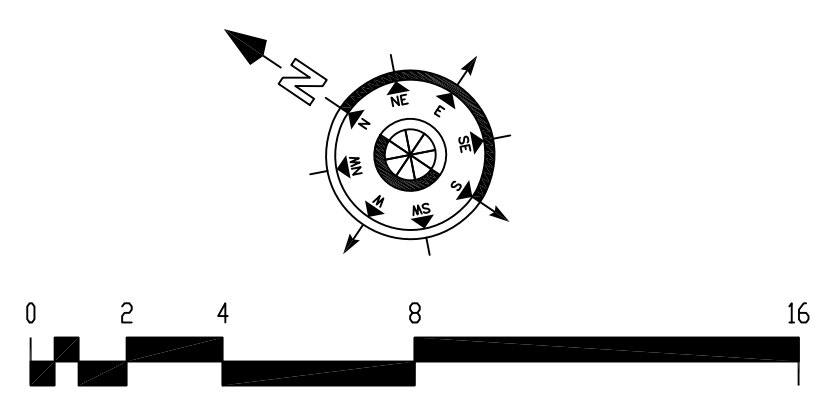


HOUSE ON HILLSBOROUGH BLVD.  
HILLSBOROUGH, CA

CHARLES CREIGHTON CARLIN, AIA  
ARCHITECT



PROPOSED SECOND FLOOR PLAN  
 1/4" = 1'-0"



HOUSE ON HILLSBOROUGH BLVD.  
 HILLSBOROUGH, CA

CHARLES CREIGHTON CARLIN, AIA  
 ARCHITECT





ROOF PLATE  
EL. 22'-0"

SECOND FLOOR  
EL. 14'-0"

FIRST FLOOR  
EL. 2'-0"

**SOUTHWEST ELEVATION**  
1/4" = 1'-0"

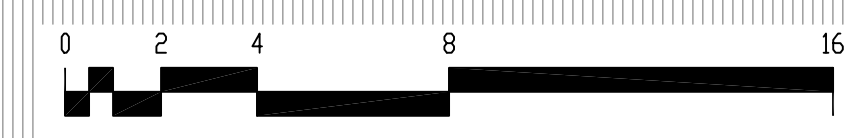


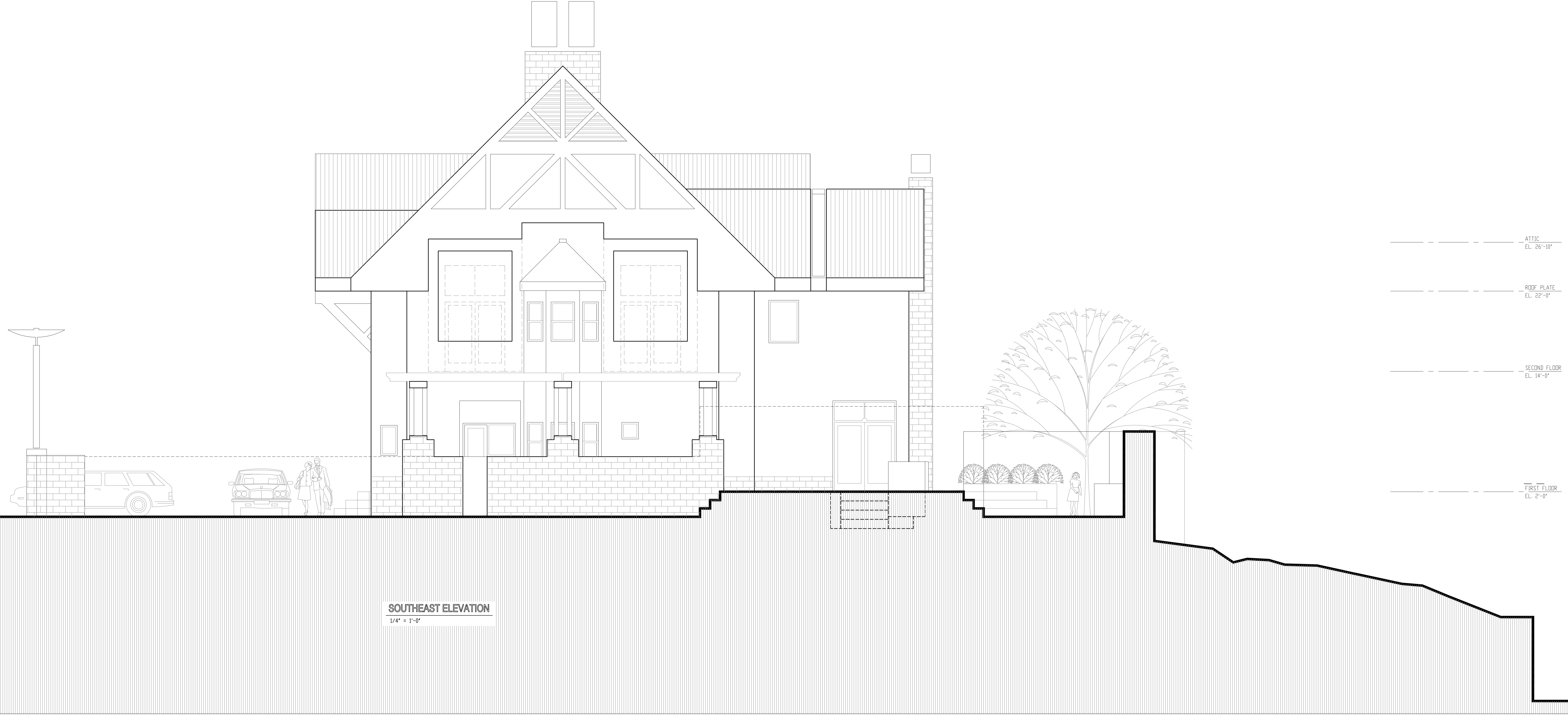
ROOF PLATE  
EL. 22'-0"

SECOND FLOOR  
EL. 14'-0"

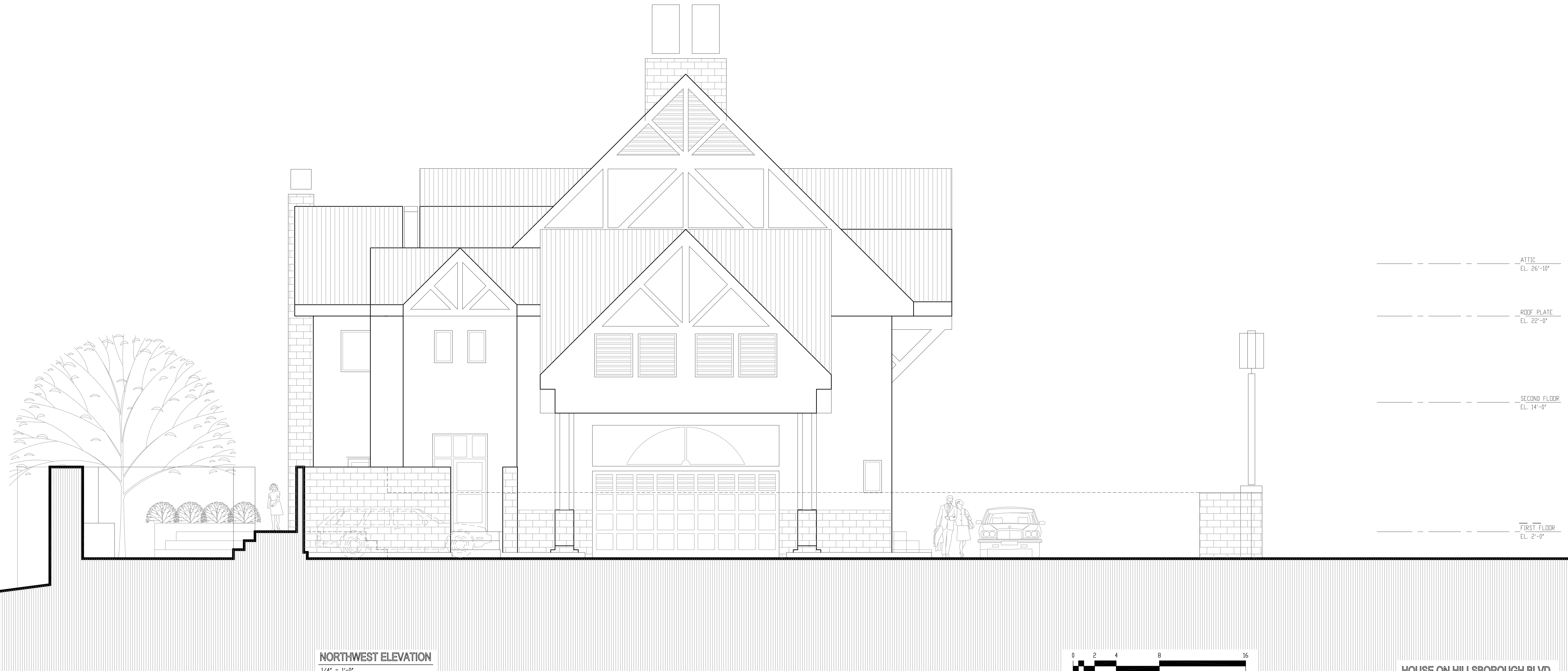
FIRST FLOOR  
EL. 2'-0"

**NORTHEAST ELEVATION**  
1/8" = 1'-0"

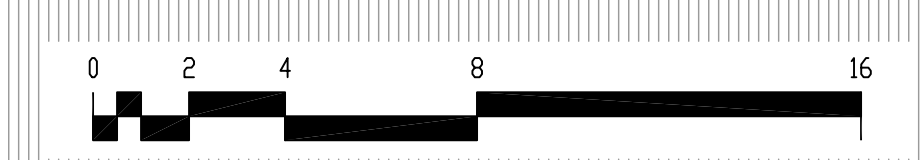




**SOUTHEAST ELEVATION**  
1/4" = 1'-0"



**NORTHWEST ELEVATION**  
1/4" = 1'-0"



HOUSE ON HILLSBOROUGH BLVD.  
HILLSBOROUGH, CA

CHARLES CREIGHTON CARLIN, AIA  
ARCHITECT