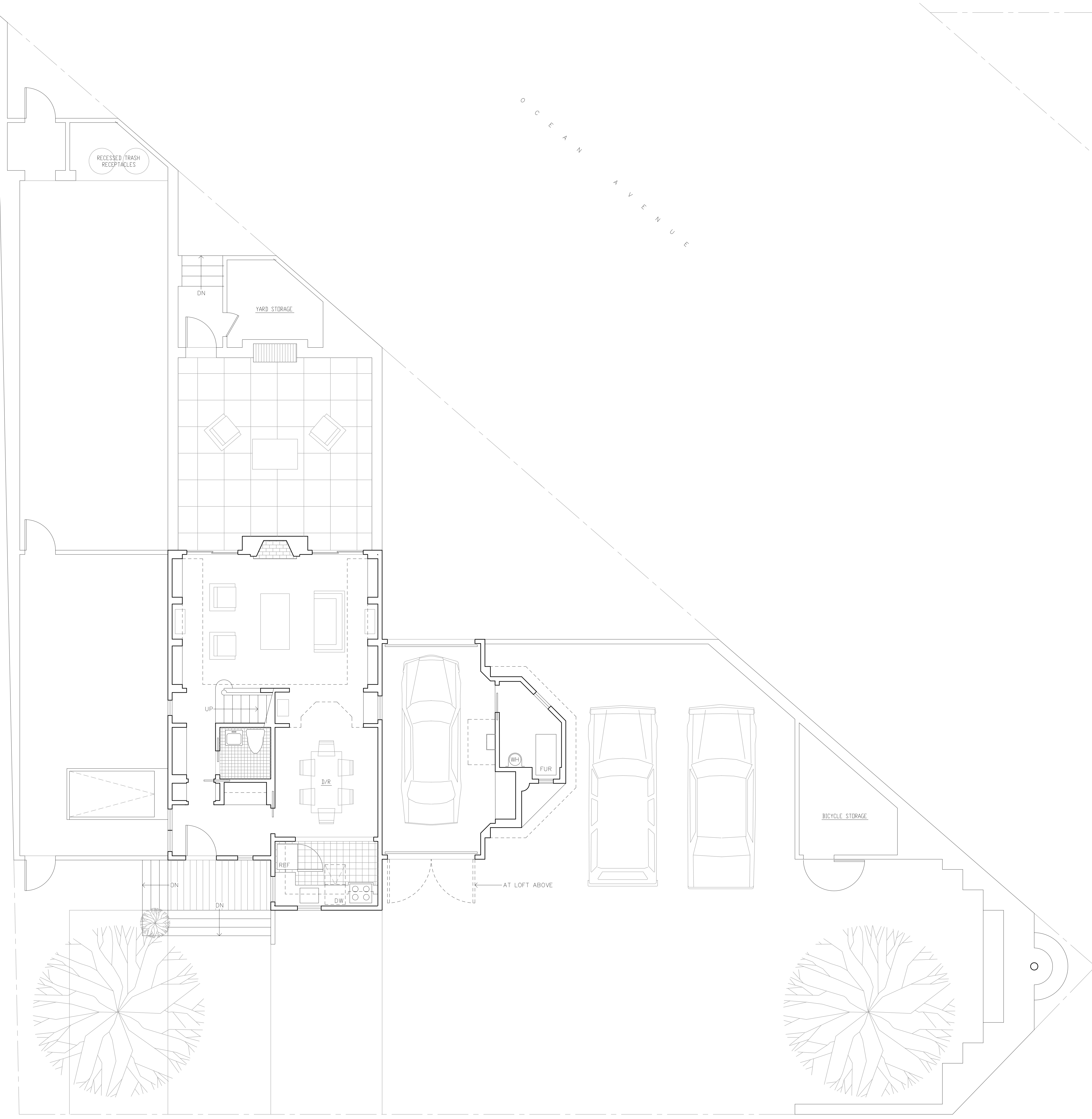
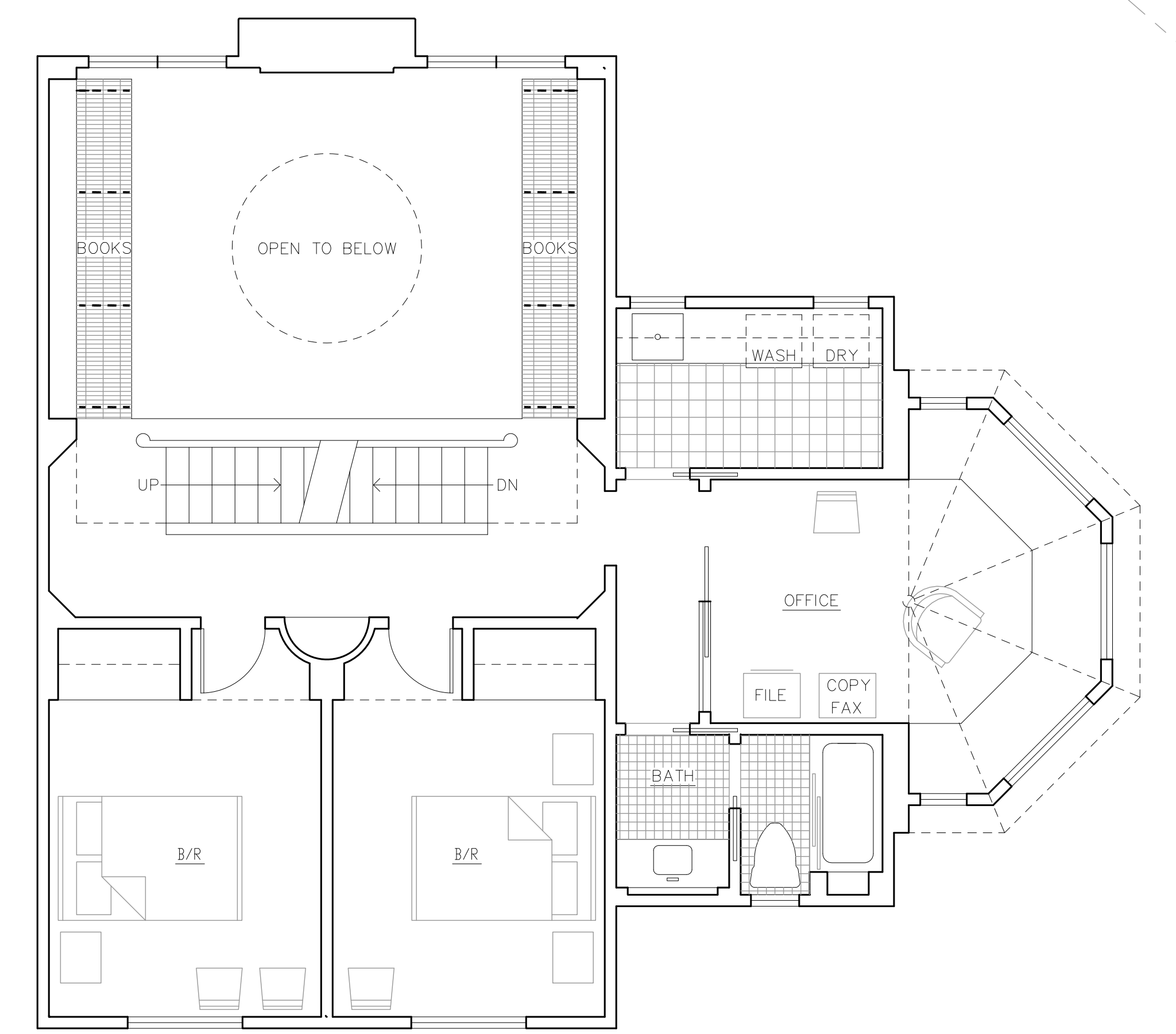


A new custom residence situated in a southern Maine beachfront community, the design points to the American single style that emerged in the mid-twentieth century. Organized on three small levels, interior functions take advantage of prevailing ocean views to the northeast and southeast while a dramatic three story volume is used for the living room that is disposed adjacent to a rear yard patio. Design completed in 1997, unbuilt.

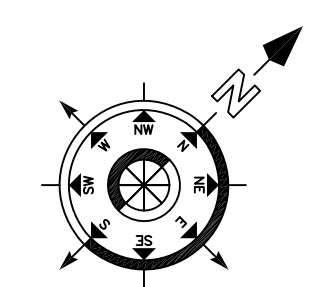


FIRST FLOOR PLAN
1/4" = 1'-0"

B E A C H P L U M L A N E



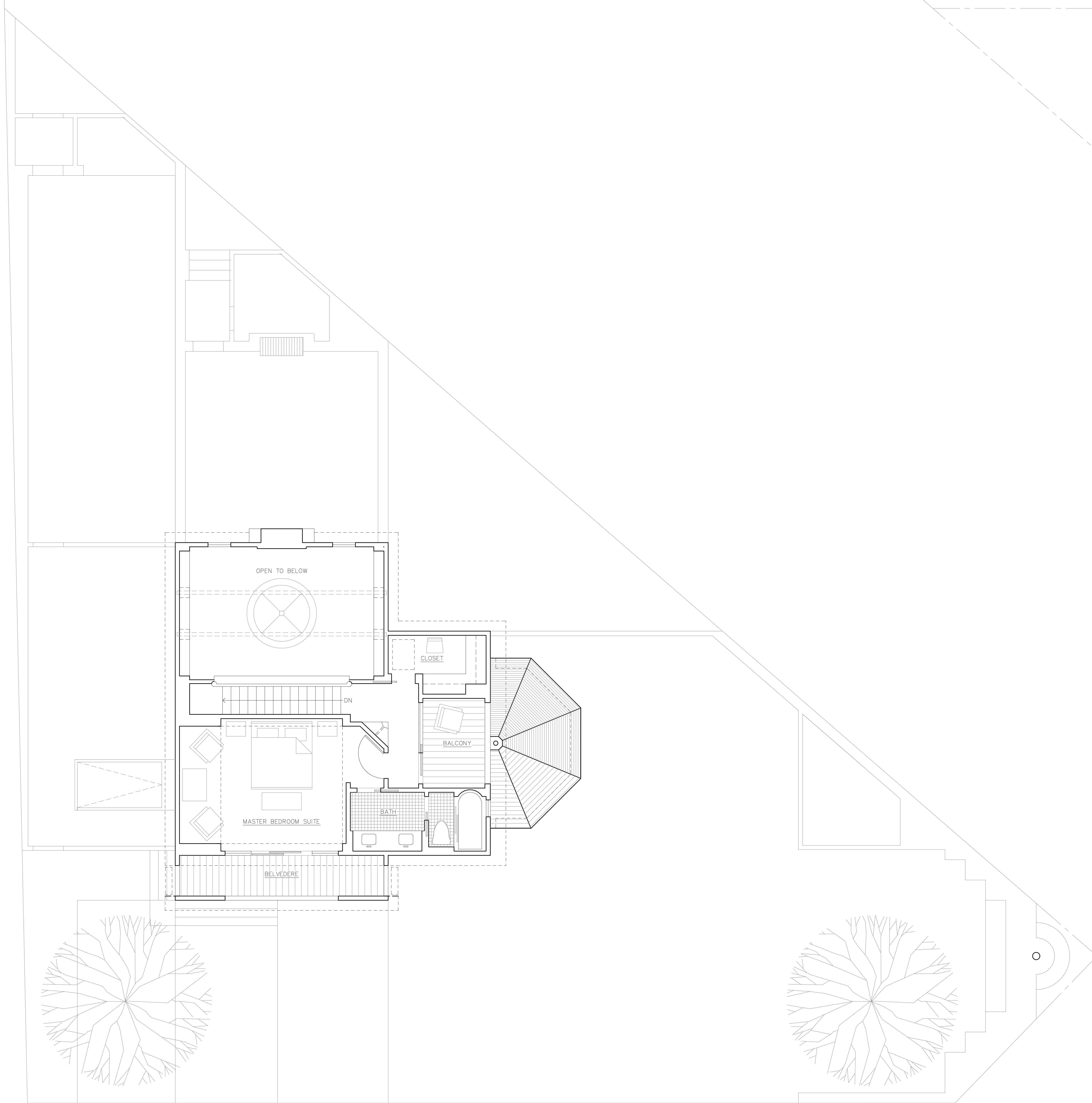
SECOND FLOOR PLAN
1/4" = 1'-0"



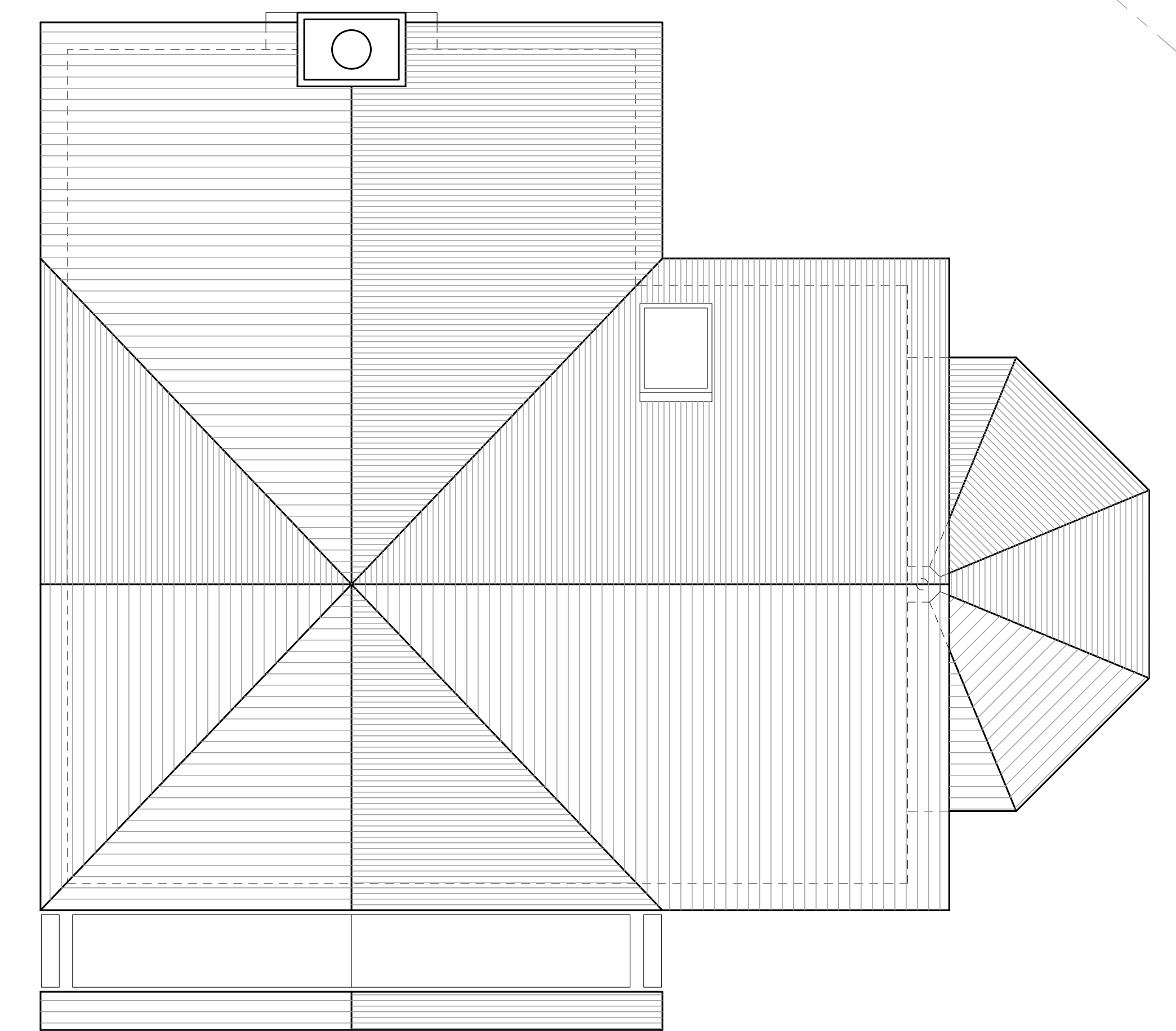
HOUSE AT FOOTBRIDGE BEACH
BEACH PLUM LANE
OGUNQUIT, ME

CHARLES CREIGHTON CARLIN, AIA
ARCHITECT

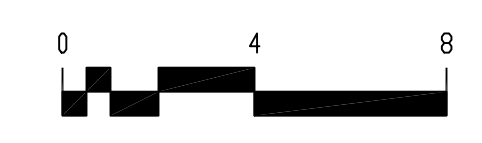
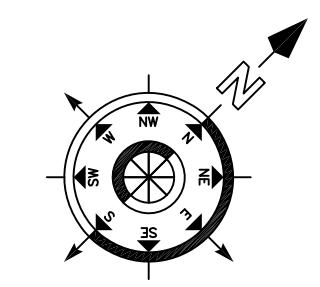
AUGUST 24, 2012



THIRD FLOOR PLAN
1/4" = 1'-0"



ROOF PLAN
1/4" = 1'-0"



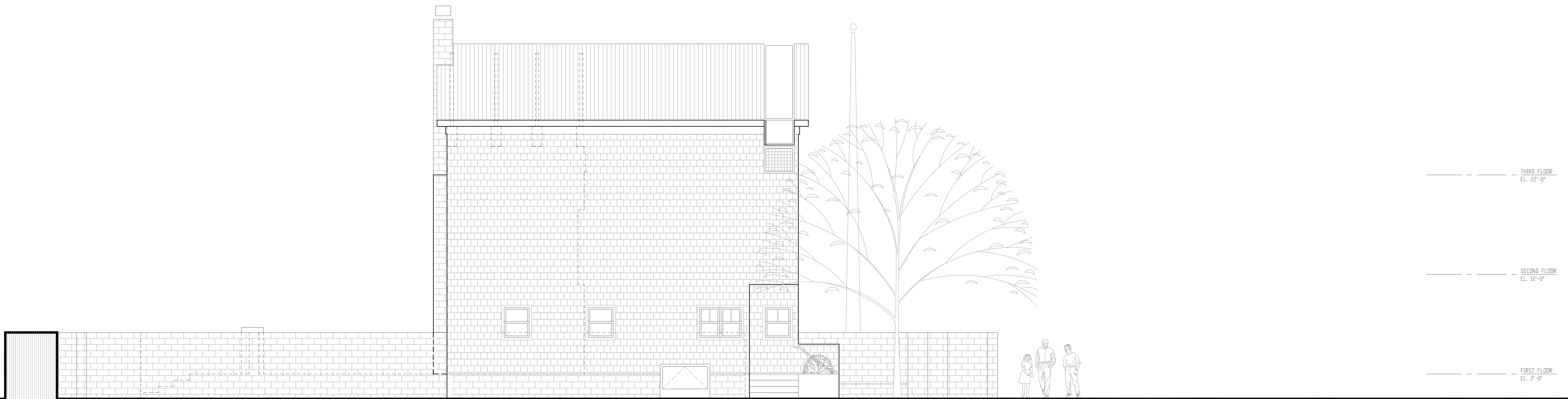
HOUSE AT FOOTBRIDGE BEACH
BEACH PLUM LANE
OGUNQUIT, ME

CHARLES CREIGHTON CARLIN, AIA
ARCHITECT

AUGUST 24, 2012



SOUTHEAST ELEVATION
1/4" = 1'-0"



SOUTHWEST ELEVATION
1/4" = 1'-0"

HOUSE AT FOOTBRIDGE BEACH
BEACH PLUM LANE
OGUNQUIT, ME

CHARLES CREIGHTON CARLIN, AIA
ARCHITECT

AUGUST 24, 2012



NORTHEAST ELEVATION
1/4" = 1'-0"



NORTHWEST ELEVATION
1/4" = 1'-0"

HOUSE AT FOOTBRIDGE BEACH
BEACH PLUM LANE
OGUNQUIT, ME

CHARLES CREIGHTON CARLIN, AIA
ARCHITECT

AUGUST 24, 2012 4